

ATELIER | | TORTIL

MÉDITERRANÉE

MÉDITERRANÉE

The Mediterranean Sea, mythical with its legendary waters, continues to be a fascinating source of inspiration and has been the backdrop for our eponymous collection of hand-knotted and hand-woven rugs made with wool, raffia, jute, linen, cotton or silk.

Méditerranée takes us on a journey across a poetic setting which encapsulates through a fusion of colours, lights, scales and simple graphics the rough but also sophisticated beauty of the Mediterranean landscape.

The Capri, Naxos, Syros or Ibiza rugs, are, amongst others, reminiscent of sun-kissed olive groves, terracotta tiles, multicoloured shores but also of local soils, stones, waters and silver-grey vegetation.

This spellbinding collection is a celebration of a fine craftsmanship deeply anchored in the past and regroups a line of bespoke rugs not only elegant and refined but also luminous.

Celebrating ancestral crafts, such a mesmerizing mixture yields a raw, elegant, luminous, refined line of bespoke rugs.

Mer mythique aux eaux légendaires, la Méditerranée est une fascinante source d'inspirations et a servi de toile de fond à une collection éponyme de tapis en laine, raphia, jute, lin, coton ou soie, tissés et noués main.

Méditerranée est un voyage en terres poétiques qui exprime à travers des jeux de couleurs, de lumières, d'échelles et de graphismes simples, la beauté à la fois brute et sophistiquée des paysages méditerranéens.

Les tapis Capri, Naxos, Syros ou Ibiza, entre autres, évoquent ainsi des champs d'oliviers dorés par le soleil, des tuiles de terre cuite, des rivages polychromes, des couleurs de terre, de pierre, d'eau, de feuillage vert argent...

Fruit d'un artisanat ancestral, cette envoûtante collection compose ainsi une ligne de tapis sur mesure, élégante, lumineuse et raffinée.





ATELIER TORTIL

Atelier Tortil is a design house and a convergence of expertise dedicated to the creation of high-end furniture, rugs, and lighting. With a remarkable career as a designer, artistic director, and general manager in renowned decorative arts brands, Jean-Pierre Tortil launched his own atelier in 2019, bringing together artisanal expertise in areas such as woodwork, metalwork, upholstery, and rug making, whether woven, knotted, or tufted.

Atelier Tortil offers architects and decorators an inspiring 360-degree approach, where bespoke services and personalized designs come to life through genuine collaboration. Our team of exceptional designers and artisans is dedicated to crafting unique pieces that cater to the discerning tastes of an international clientele, ensuring every project is a masterpiece of creativity and excellence.



HAND WOVEN

Flat-weave rugs

Our flat-weave rugs are mostly made in Portugal. They can be woven in raphia, wool, jute, Tencel or outdoor yarns. They are named flat-weave as they have no pile. Our looms have a maximum width of 3.50 metres. The width can be made increased by stitching one width to another. To fix thick weaves, a layer of latex is applied to the backing of the rug which can be in turn applied more densely for high-traffic areas or if used as wall-to-wall carpet.

Tissés plats

Fabriqués majoritairement au Portugal, nos tissés plats peuvent être tissés en raphia, en laine, en jute, en Tencel ou bien en fibre outdoor. La finition de ces tapis n'offre aucun relief, d'où l'appellation de tissé plat. Nos métiers offrent une largeur maximale de 3.50 mètres. Nous pouvons réaliser des largeurs plus importantes en assemblant les lés par une couture. Pour fixer le tissage déjà dense, une pellicule de latex est appliquée sur la semelle du tapis. Cette dernière peut être appliquée de façon plus importante pour un usage plus intensif ou pour une pose mur à mur. Dimensions, couleurs et matières disponibles.



COMO I-FW

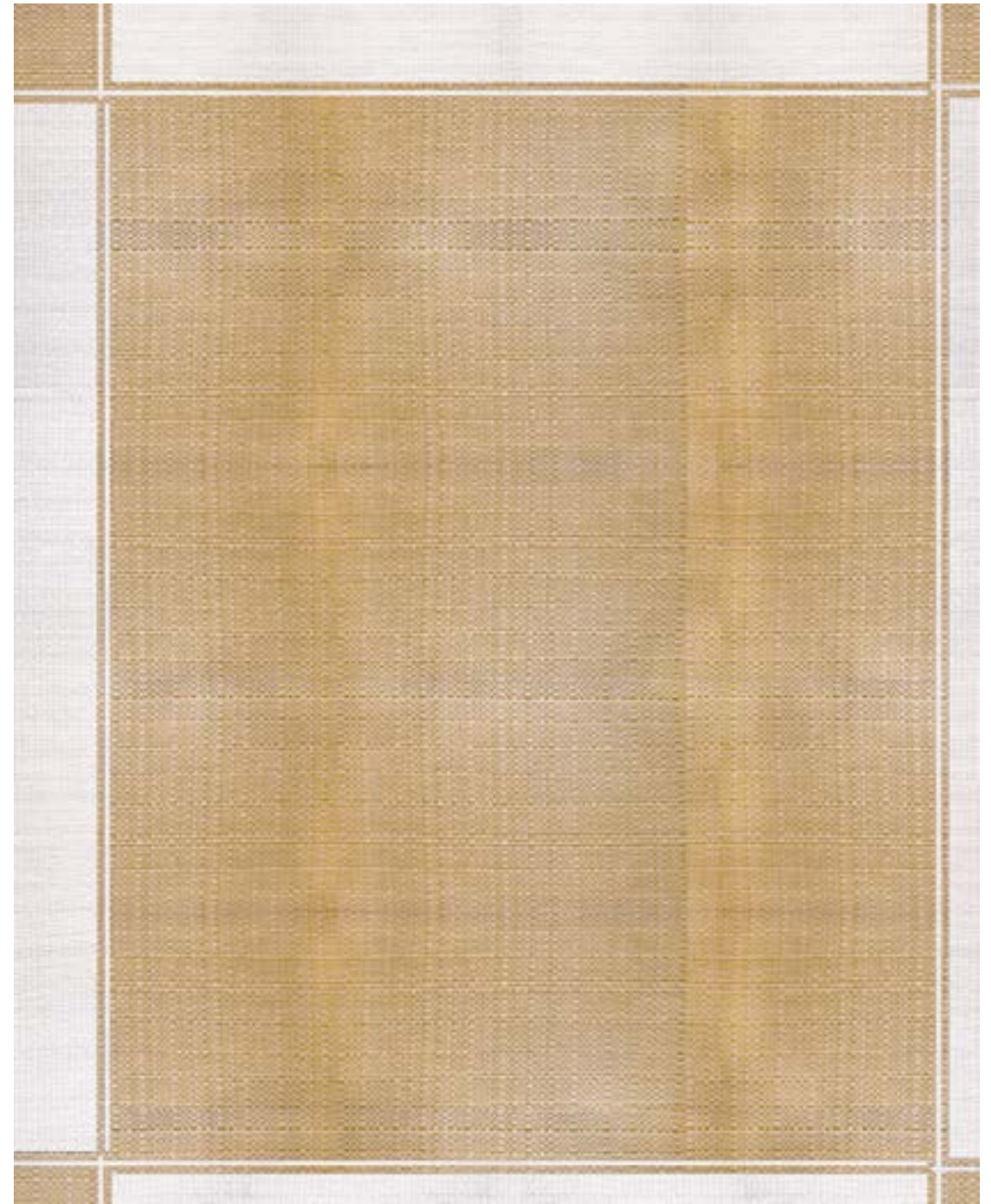
Colour: Straw

Content: Raffia, Wool
Matière: raphia, laine

Max. width: 3.50m
Largeur max. : 3.50m

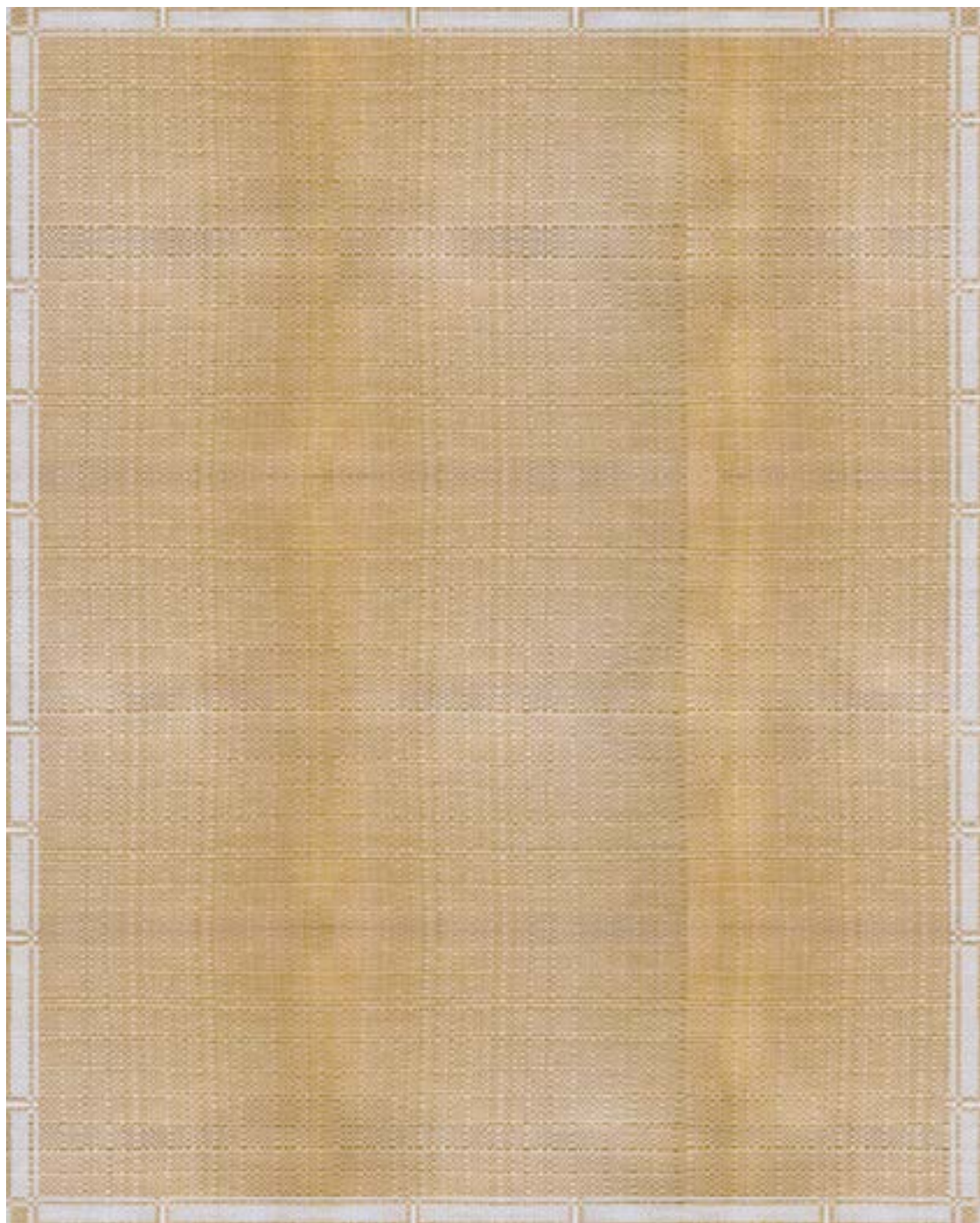


A | T



8' X 10' - 245 X 305 cm

A | T



8' X 10' - 305 X 245 cm



RIVA I-FW

Colour: Straw

Content: Raffia, Wool
Matière: raphia, laine

Max. width: 3.50m
Largeur max. : 3.50m

PALMA IV-FW

Colour: Wheat

Content: Raffia, Jute
Matière: raphia, jute

Max. width: 3.50m
Largeur max. : 3.50m



A | T

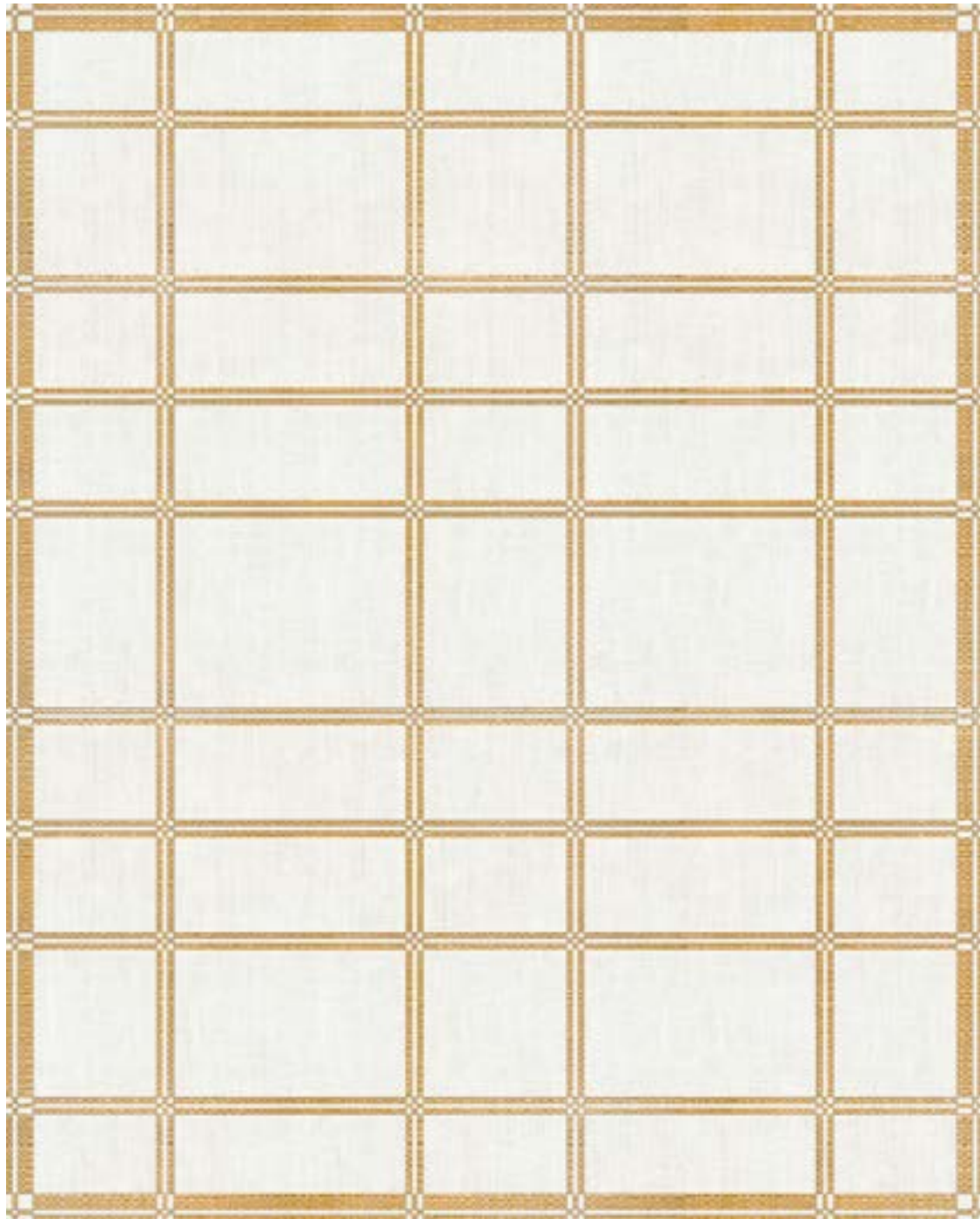


8' X 10' - 305 X 245 cm

A | T



CALVI I-FW, Straw. Raffia, Wool - raphia, laine



8' X 10' - 305 X 245 cm

A | T



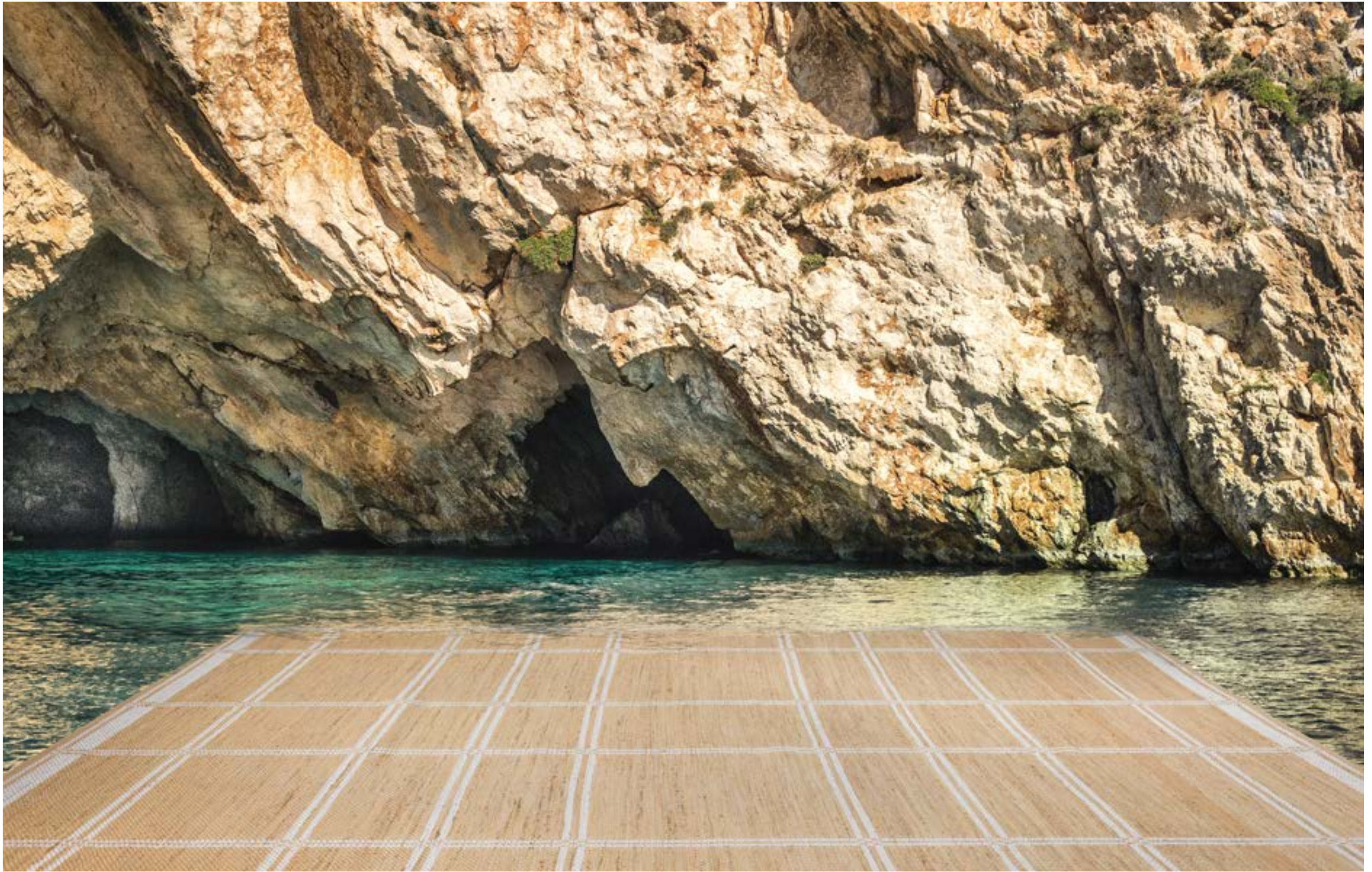
CALVI II-FW

Colour: Chalk

Content: Wool, Raffia
Matière: laine, raphia

Max. width: 3.50m
Largeur max. : 3.50m

A | T



CALVI I-FW, Straw. Raffia, Wool - raphia, laine

PONZA I-FW

Colour: Straw

Content: Raffia, Wool
Matière: raphia, laine

Max. width: 3.50m
Largeur max. : 3.50m

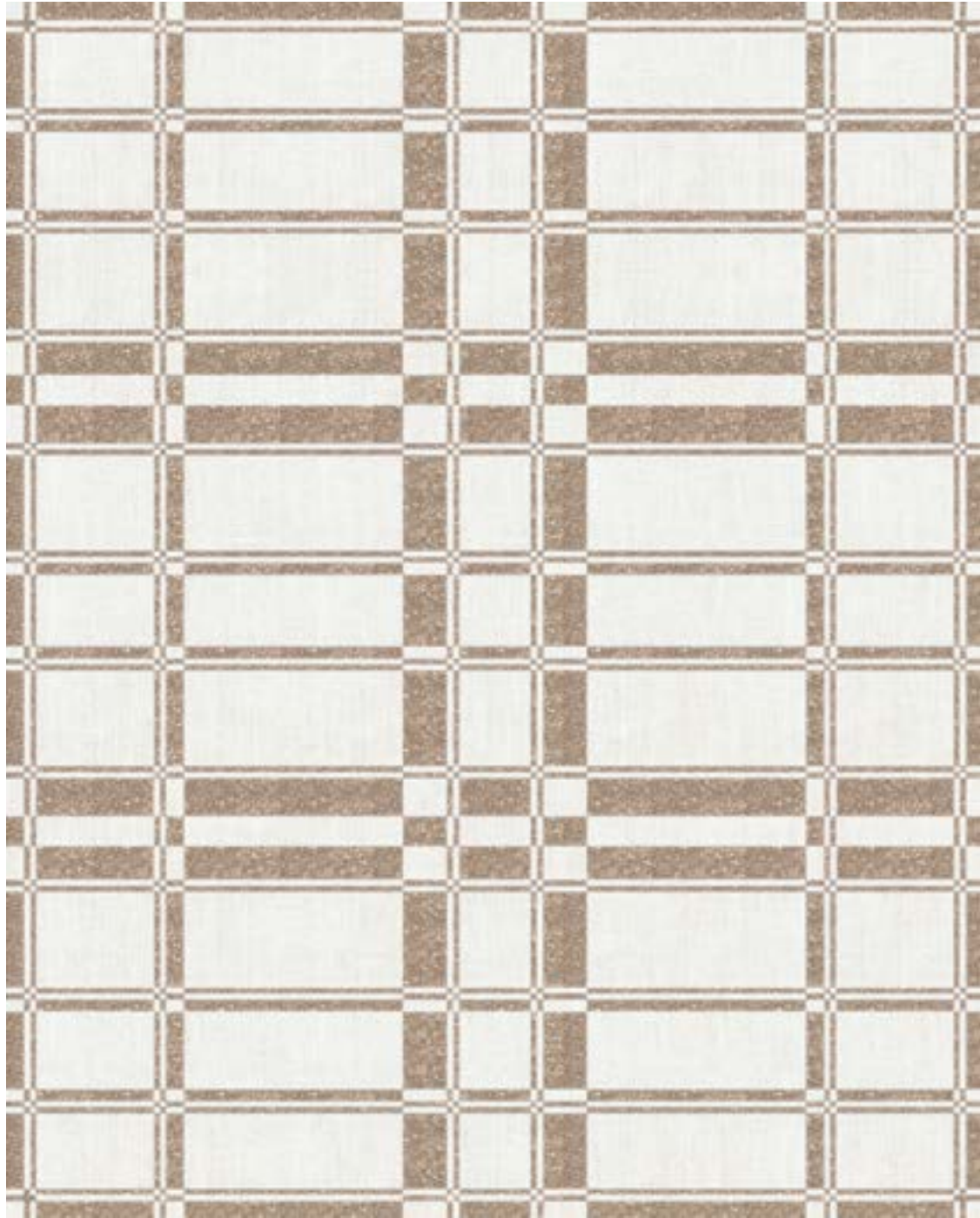


A | T



8' X 10' - 305 X 245 cm

A | T



8' X 10' - 245 X 305 cm

A | T



PONZA V-FW

Colour: Twine

Content: Wool, Cotton
Matière: laine, coton

Max. width: 3.50m
Largeur max. : 3.50m

A | T

CAPRI I-FW

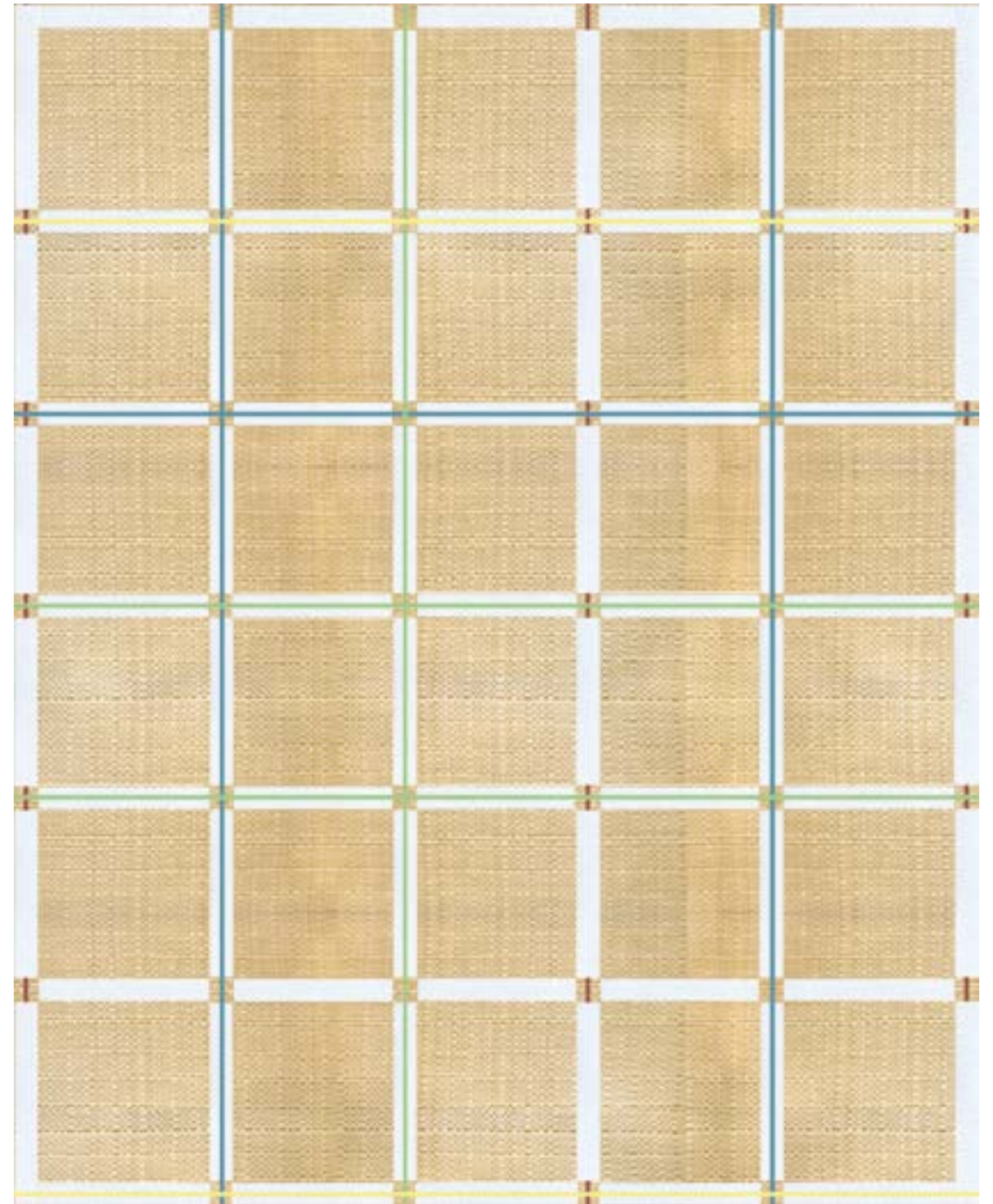
Colour: Straw

Content: Raffia, Wool
Matière: raphia, laine

Max. width: 3.50m
Largeur max. : 3.50m



A | T

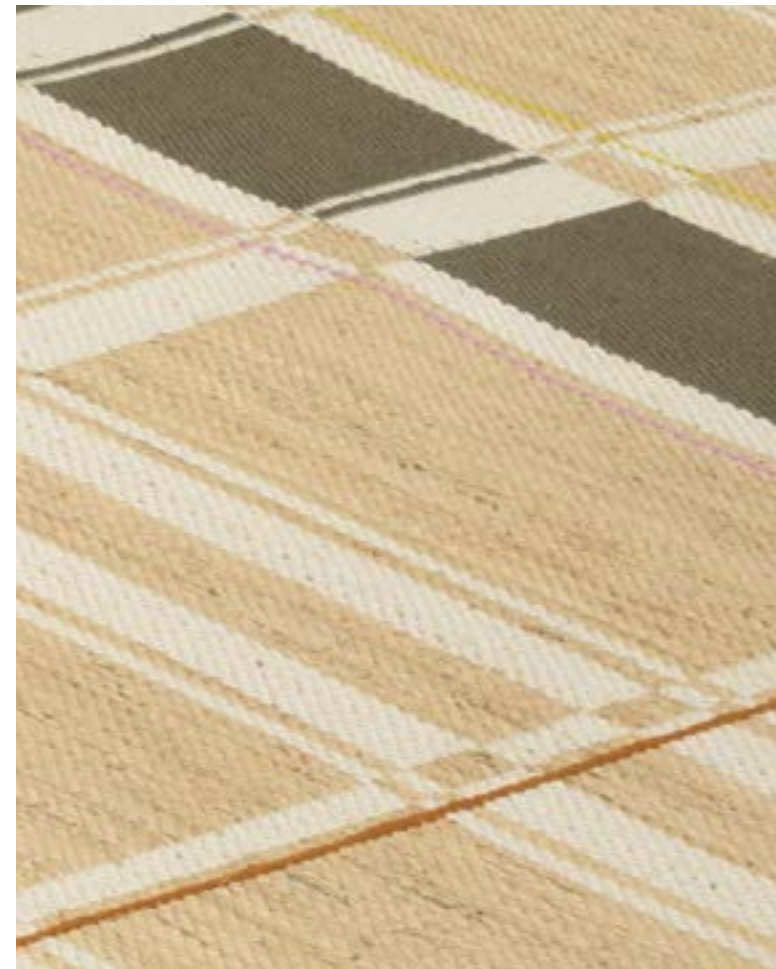


8' X 10' - 245 X 305 cm

A | T



8' X 10' - 245 X 305 cm



IBIZA I-FW

Colour: Olea

Content: Raffia, Wool
Matière: raphia, laine

Max. width: 3.50m
Largeur max. : 3.50m

HAND-KNOTTED

Bespoke Hand-knotted rugs

The origin of the art of hand-knotting probably goes back to thousands of years ago in Central Asia. Names given to hand-knotted rugs usually come from the tribe or the place where they have been manufactured.

Amongst the great variety of existing techniques, our workshops have perfected the various skills to master different kinds of knots. This extensive range of know-hows enables us to create exceptional bespoke pieces.

Carried out by high-end skilled artisans, our hand-knotted rugs are woven on vertical looms with stretched threads mostly made of cotton. Our rugs can be made using various materials such as wool, cotton, linen, jute, silk, viscose and other fibres. In velvet cut, loop, flat, or shaved at different heights to give relief, they come in a large variety of weaving and finishes.

Our rugs are unique, custom-made pieces. All sizes, materials and colours are available upon request.

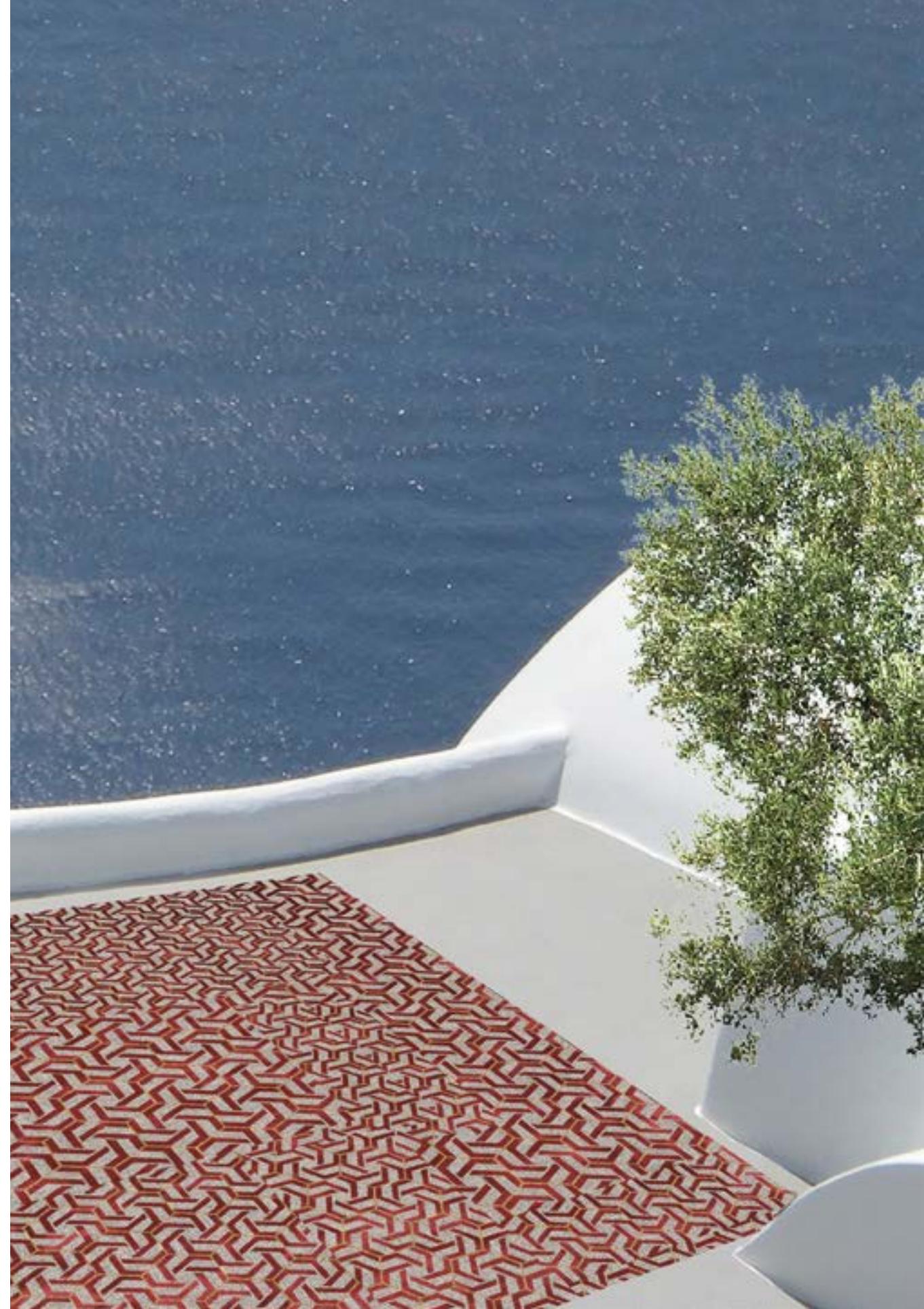
L'origine de l'art du noué-main remonte probablement à des milliers d'années en Asie centrale. Les noms donnés aux tapis noués-main proviennent généralement de la tribu ou de l'endroit où ils ont été tissés.

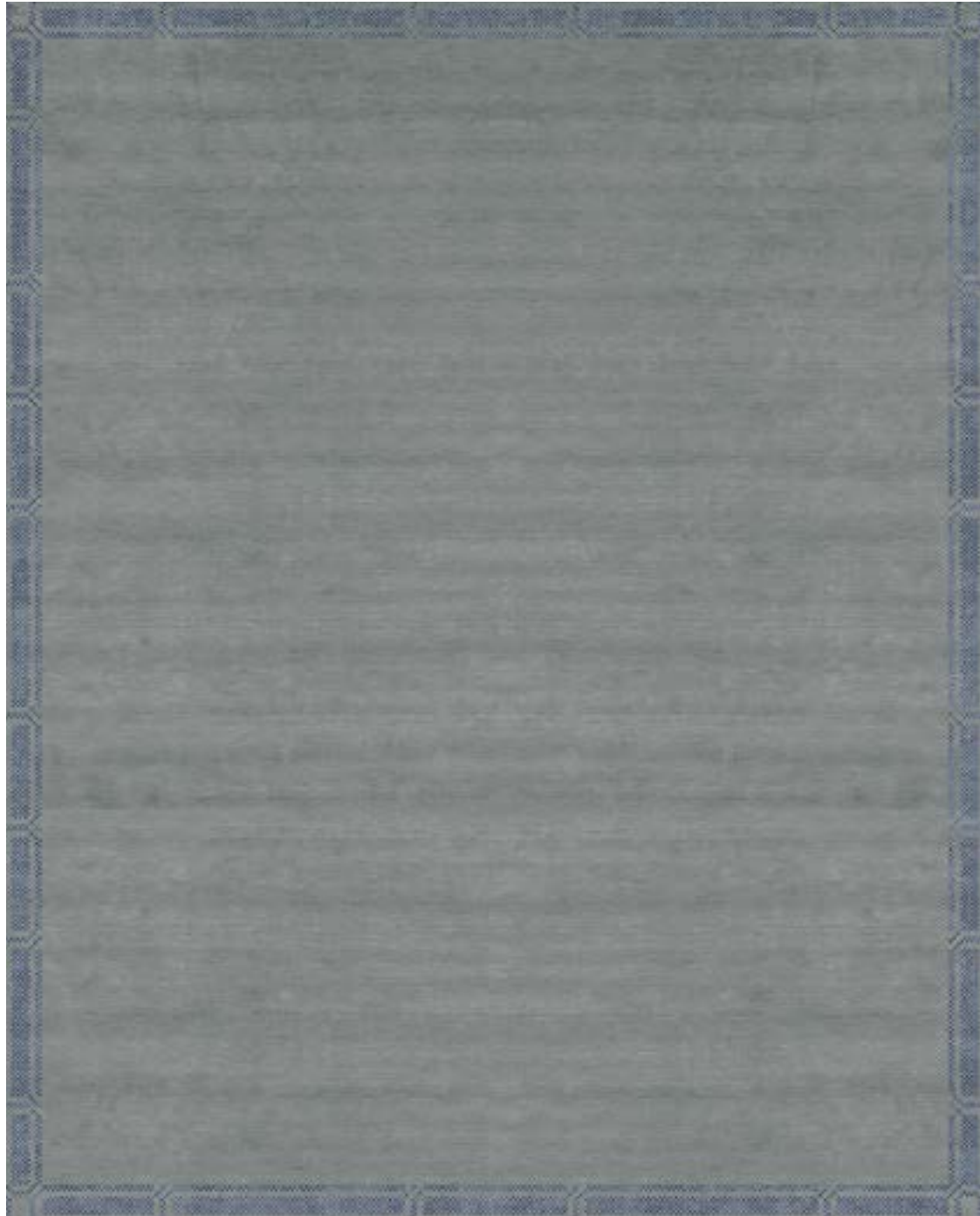
À ce jour, nos ateliers ont acquis une grande expertise dans cet art et maîtrisent différents types de nœuds. Cette étendue de savoir-faire, nous permet de tisser des pièces sur mesure exceptionnelles.

Réalisés par des artisans hautement qualifiés, nos tapis noués-main sont tissés sur des métiers de haute-lisse dont la chaîne est généralement en coton.

Nos tapis peuvent être tissés dans différentes matières comme la laine, le coton, le lin, le jute, la soie, la viscose, le chanvre par exemple. En velours coupé, bouclé, plat ou rasé à différentes hauteurs pour donner du relief, nos tapis sont disponibles dans une grande variété de tissages et de finitions.

Nos tapis sont des pièces uniques tissés sur mesure. Toute dimension, matière et couleur est disponible sur demande.





8' X 10' - 305 X 245 cm



ISOLA I-HK

Colour: Camargue

Content: Wool, Silk
Matière: laine, soie

Any size, colour and
material upon request
Dimensions, couleurs et
matières sur demande.

RIVA II-HK

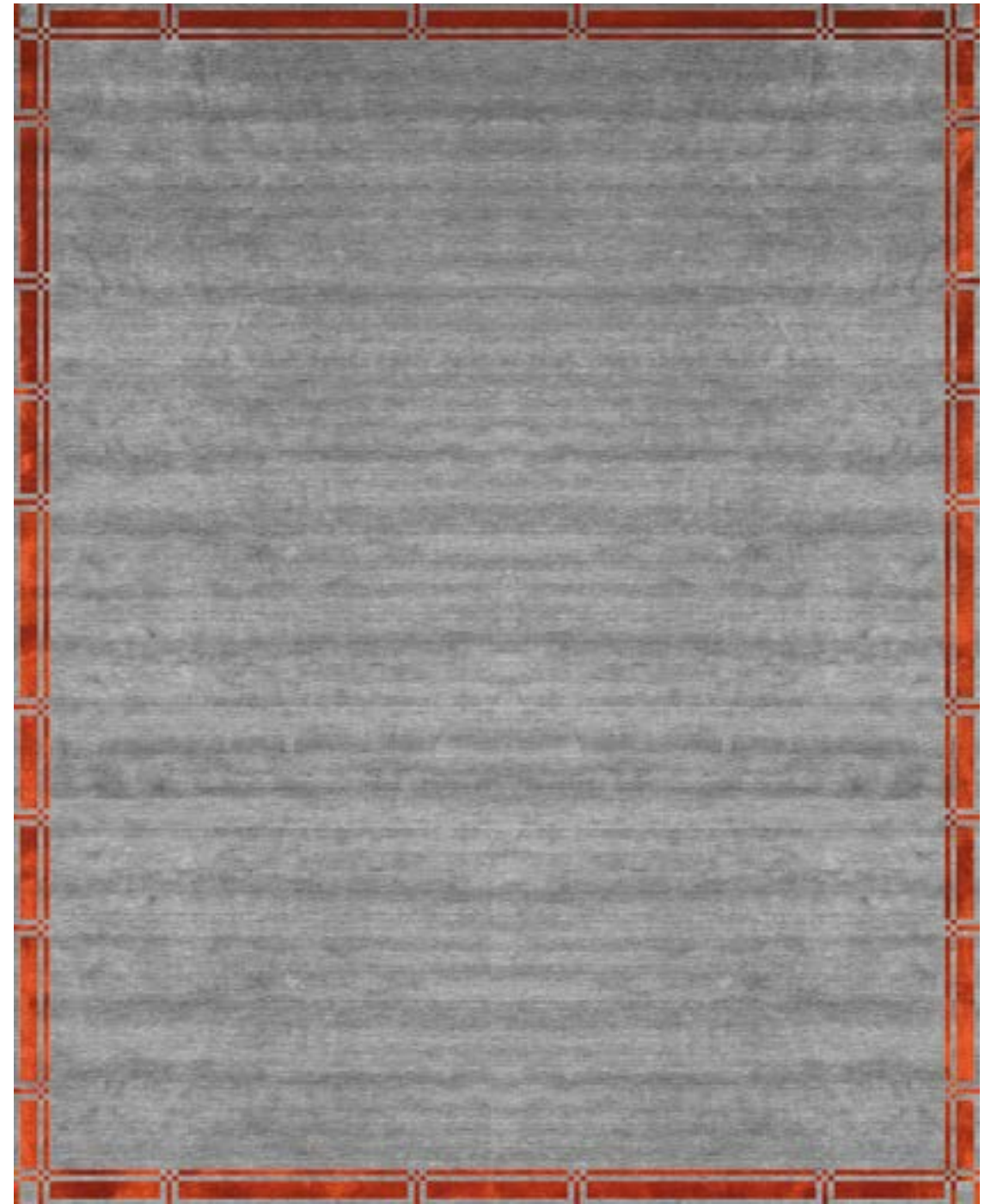
Colour: Slate

Content: Wool, Tencel
Matière: laine, Tencel

Any size, colour and
material upon request
Dimensions, couleurs et
matières sur demande.



A | T

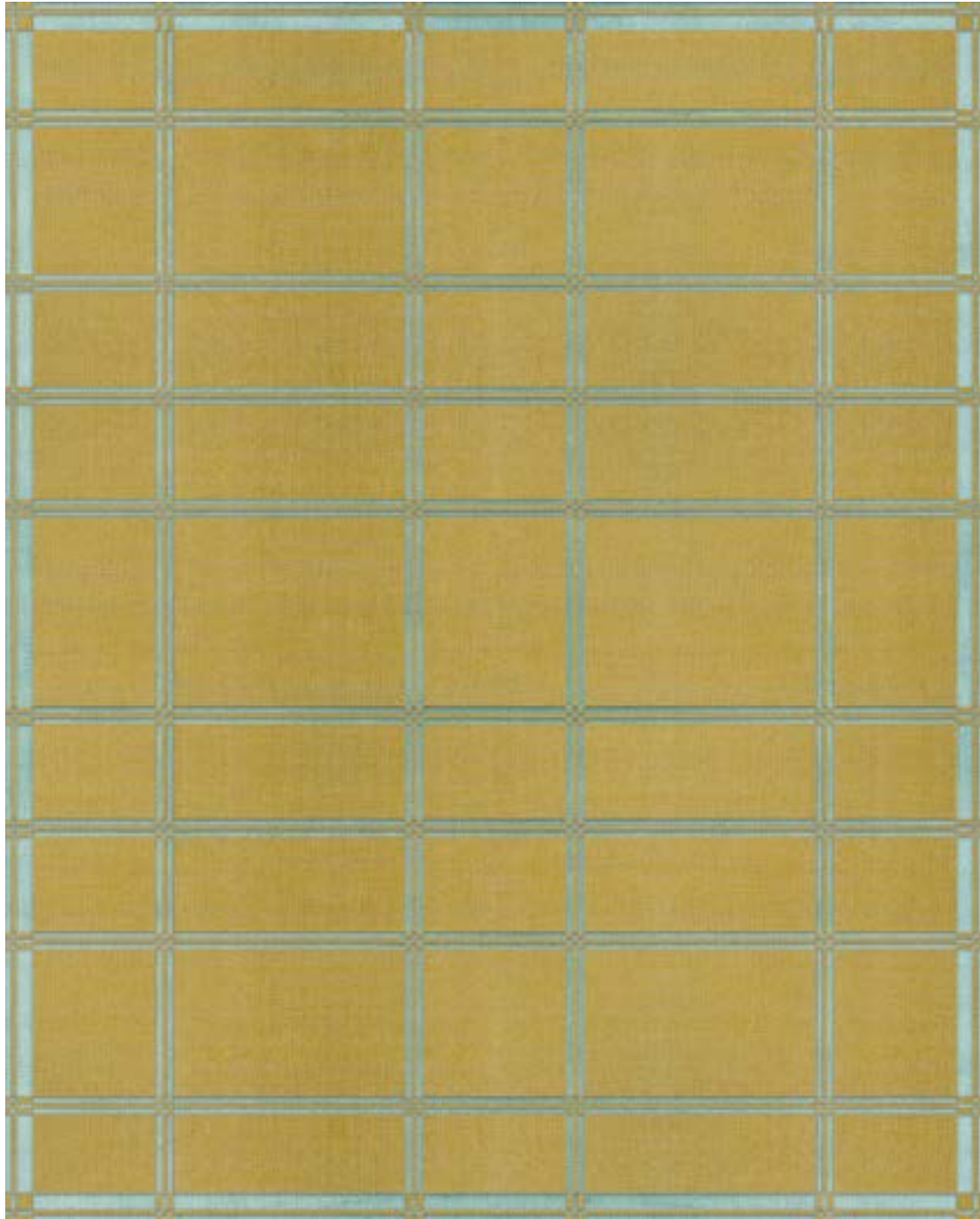


8' X 10' - 245 X 305 cm

A | T



RIVA II-HK, Azur. Wool, Tencel - laine, Tencel



8' X 10' - 305 X 245 cm



CALVI I-HK

Colour: Pollen

Content: Cotton/Wool,
Wool

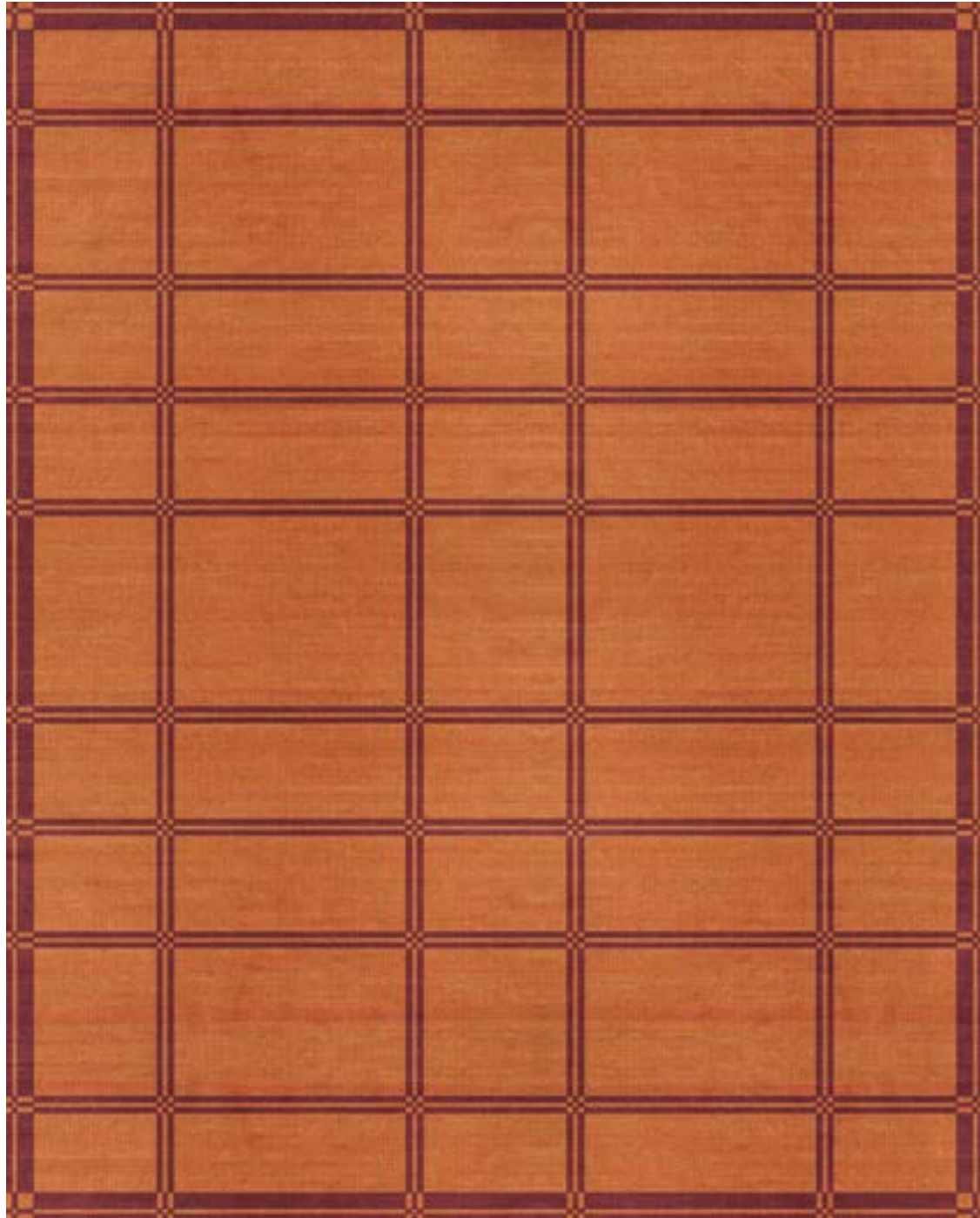
Matière: coton/laine,
laine

Any size, colour and
material upon request

Dimensions, couleurs et
matières sur demande.



CALVI I-HK, Mist. Cotton/Wool, Wool - coton/laine, laine



8' X 10' - 245 X 305 cm

A | T



CALVI II-HK

Colour: Terracotta

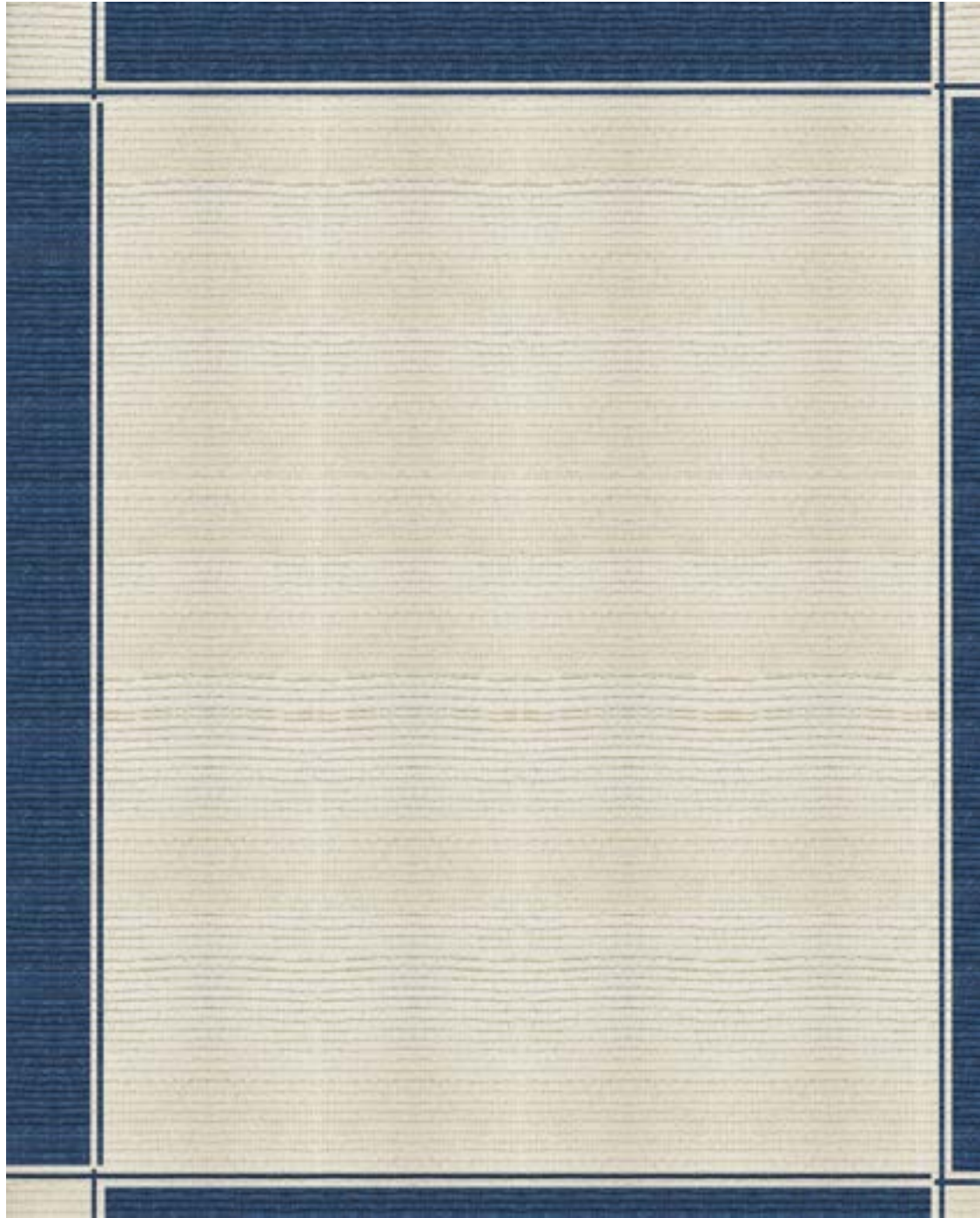
Content: Cotton, Wool
Matière: coton, laine

Any size, colour and
material upon request
Dimensions, couleurs et
matières sur demande.

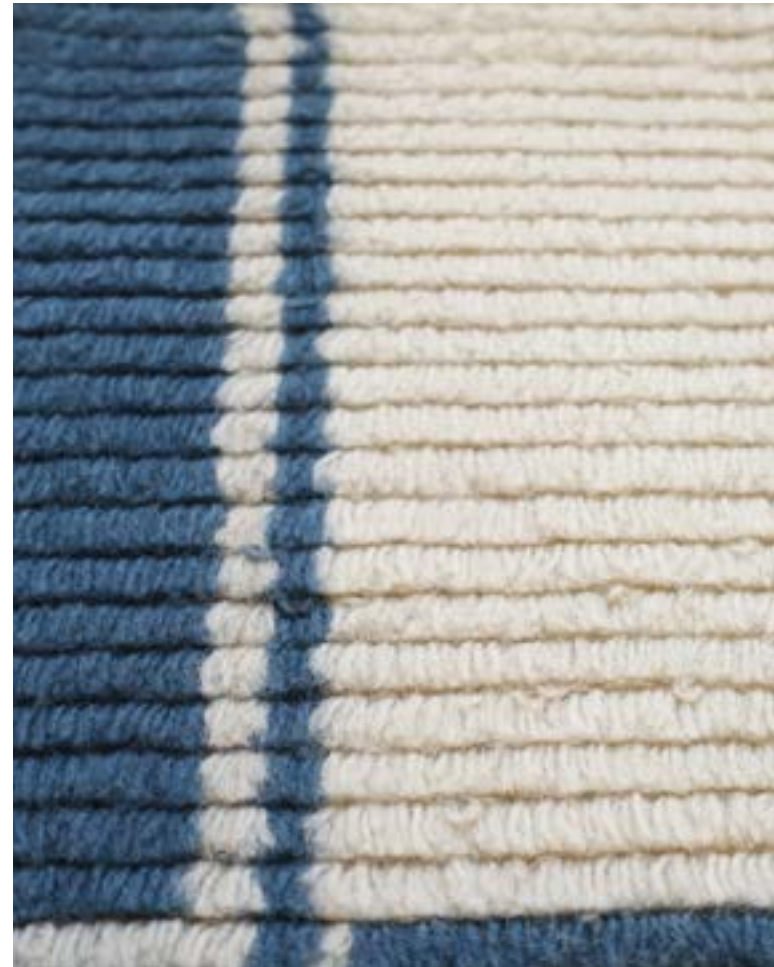
A | T



CALVI I-HK, Pollen. Cotton/Wool, Wool - coton/laine, laine



8' X 10' - 245 X 305 cm



COMO IV-HK

Colour: Calanque

Content: Wool
Matière: laine

Any size, colour and
material upon request
Dimensions, couleurs et
matières sur demande.



COMO III-HK, Twine. Jute, DP Wool - jute, laine/soie végétale

COMO II-HK

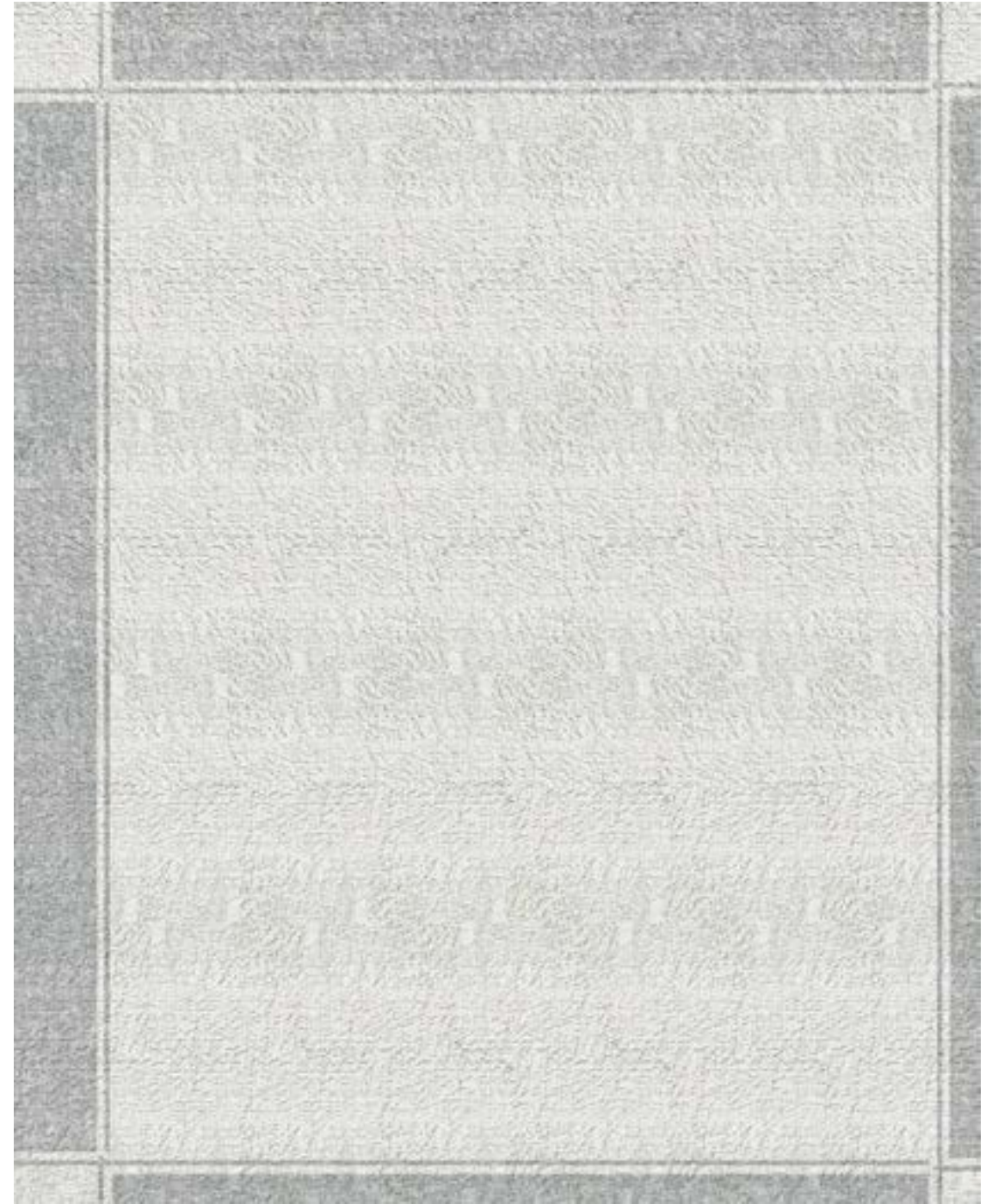
Colour: Alabaster

Content: Cotton,
Bamboo Silk

Matière: coton,
soie de bambou

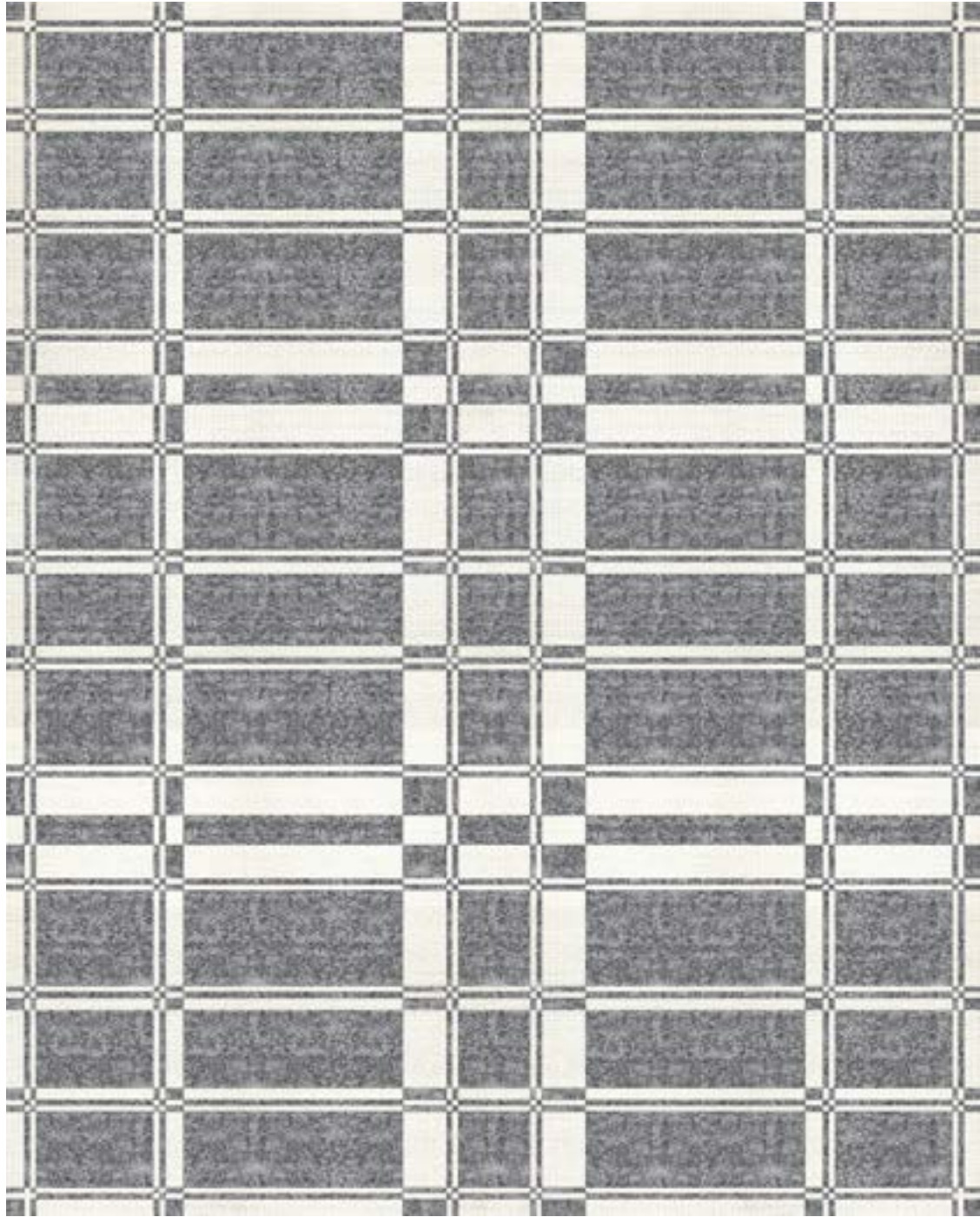
Any size, colour and
material upon request

Dimensions, couleurs et
matières sur demande.





COMO II-HK, Alabaster. Cotton, Bamboo Silk - coton, soie de bambou



8' X 10' - 305 X 245 cm

A | T



PONZA I-HK

Colour: Gravel

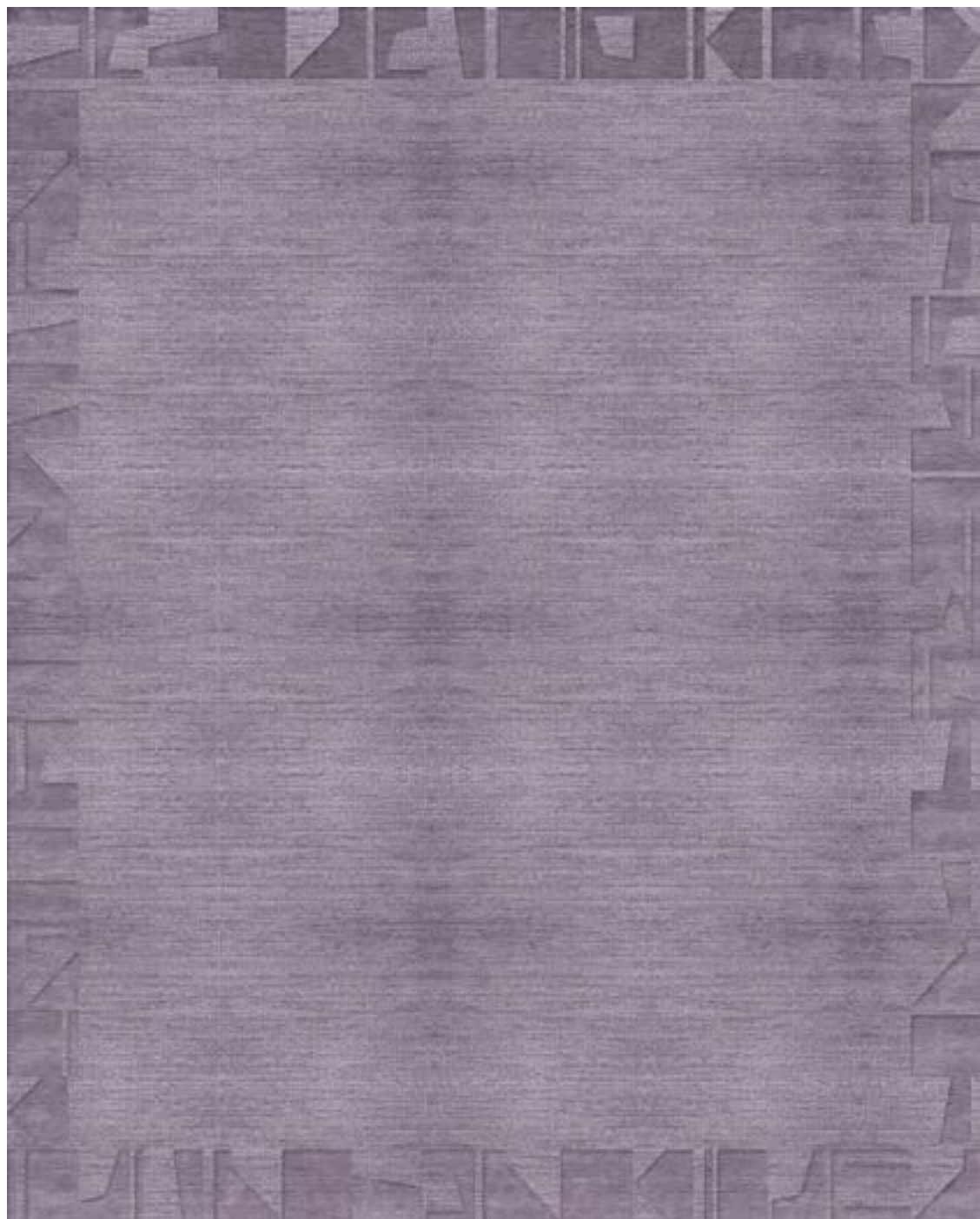
Content: DP Wool
Matière: laine / soie
végétale

Any size, colour and
material upon request
Dimensions, couleurs et
matières sur demande.

A | T



PONZA II-HK, Cardamom. Cotton, Wool, Tencel - coton, laine, Tencel



8' X 10' - 305 X 245 cm

A | T



ELBA II-HK

Colour: Lavender

Content: Semi-worsted
Wool, Wool/Silk/Linen

Matière: laine
semi-peignée,
laine/soie/lin

Any size, colour and
material upon request

Dimensions, couleurs et
matières sur demande.

A | T



ELBA I-HK, Marjolaine. Jute, Wool/Silk/Linen - jute, laine/soie/lin

PAROS I-HK

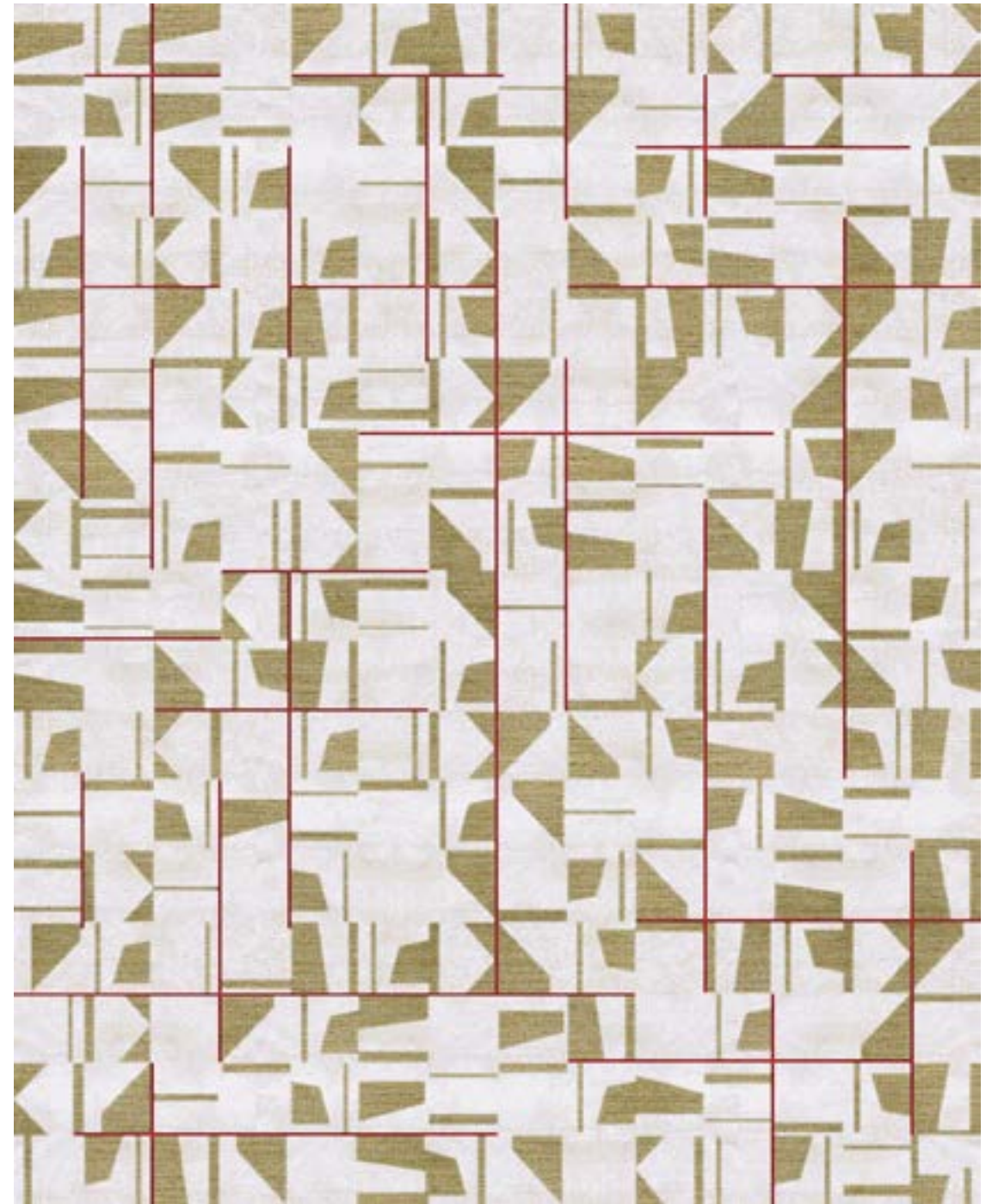
Colour: Lichen

Content: Jute, Wool/
Silk/Linen

Matière: jute,
laine/soie/lin

Any size, colour and
material upon request

Dimensions, couleurs et
matières sur demande.





PAROS II-HK, Sage. Wool/Silk/Linen, Jute - laine/soie/lin, jute

PAROS I-HK

Colour: Acqua

Content: Jute,
Wool/Silk/Linen
Matière: jute,
laine/soie/lin

Any size, colour and
material upon request
Dimensions, couleurs et
matières sur demande.





PAROS I-HK, Acqua. Jute, Wool/Silk/Linen - jute, laine/soie/lin

NAXOS I-HK

Colour: Clay

Content: Wool,Silk
Matière: laine, soie

Any size, colour and
material upon request
Dimensions, couleurs et
matières sur demande.

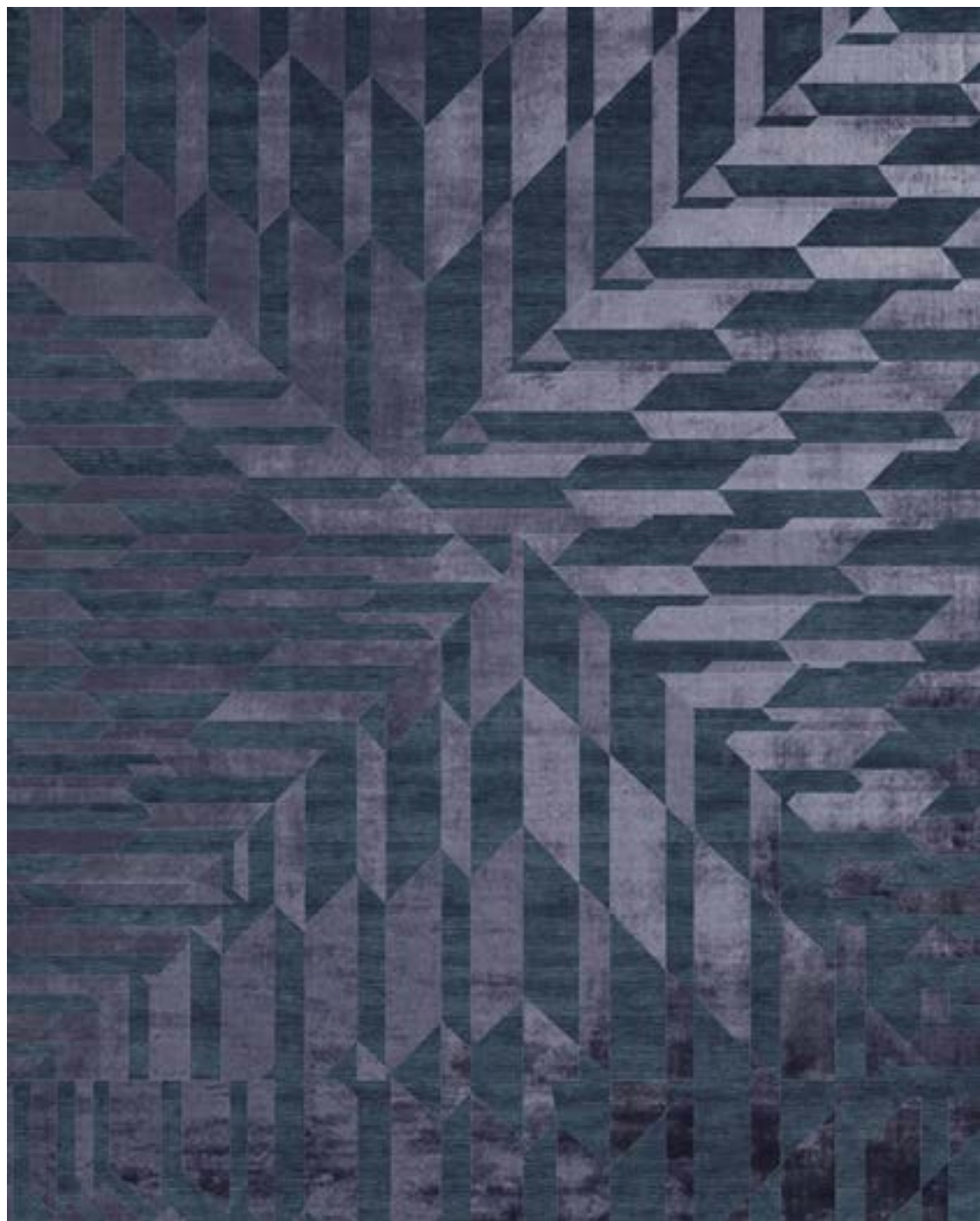


A | T



8' X 10' - 305 X 245 cm

A | T



8' X 10' - 305 X 245 cm



NAXOS I-HK

Colour: Midnight

Content: Wool, Silk
Matière: laine, soie

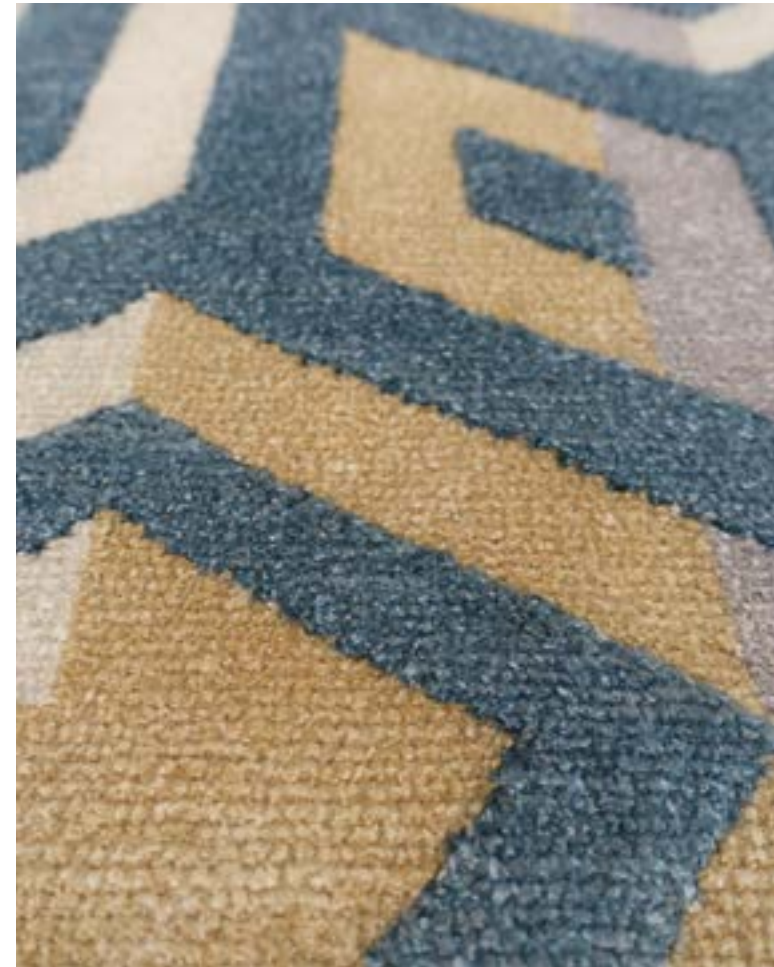
Any size, colour and
material upon request
Dimensions, couleurs et
matières sur demande.



NAXOS I-HK, Calanque. Wool, Silk - laine, soie



8' X 10' - 305 X 245 cm



OSTIE I-HK

Colour: Garrigue

Content: Wool/Linen/
Silk

Matière: laine/lin/soie

Any size, colour and
material upon request
Dimensions, couleurs et
matières sur demande.



OSTIE II-HK, Lichen. Jute/Cotton, Wool/Linen/Silk - jute/coton, laine/lin/soie

OSTIE III-HK

Colour: Maquis

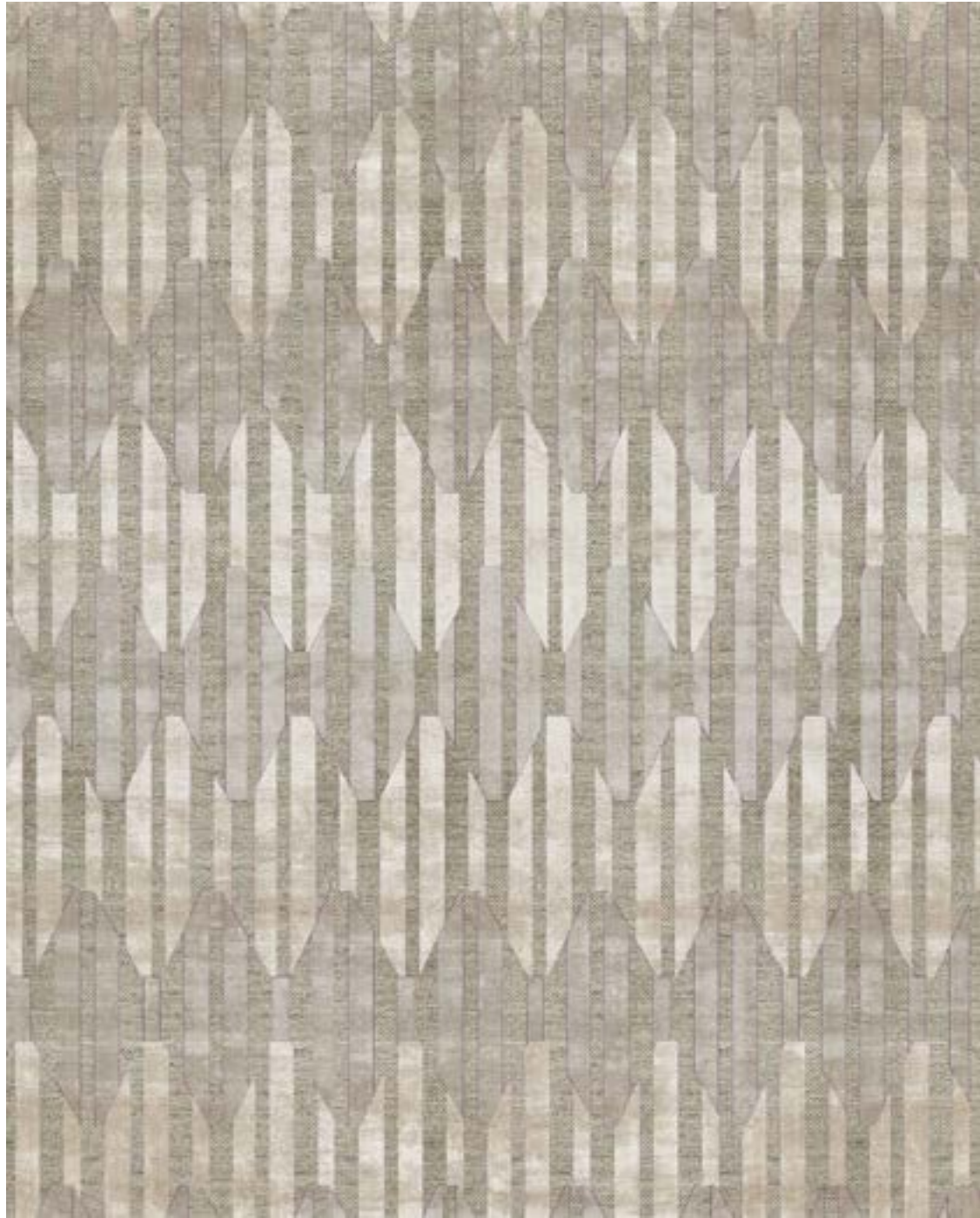
Content: Silk
Matière: soie

Any size, colour and
material upon request
Dimensions, couleurs et
matières sur demande.





OSTIE II-HK, Lichen. Jute/Cotton, Wool/Linen/Silk - jute/coton, laine/lin/soie



8' X 10' - 305 X 245 cm



PIANA I-HK

Colour: Clay

Content: Wool
Matière: laine

Any size, colour and
material upon request
Dimensions, couleurs et
matières sur demande.



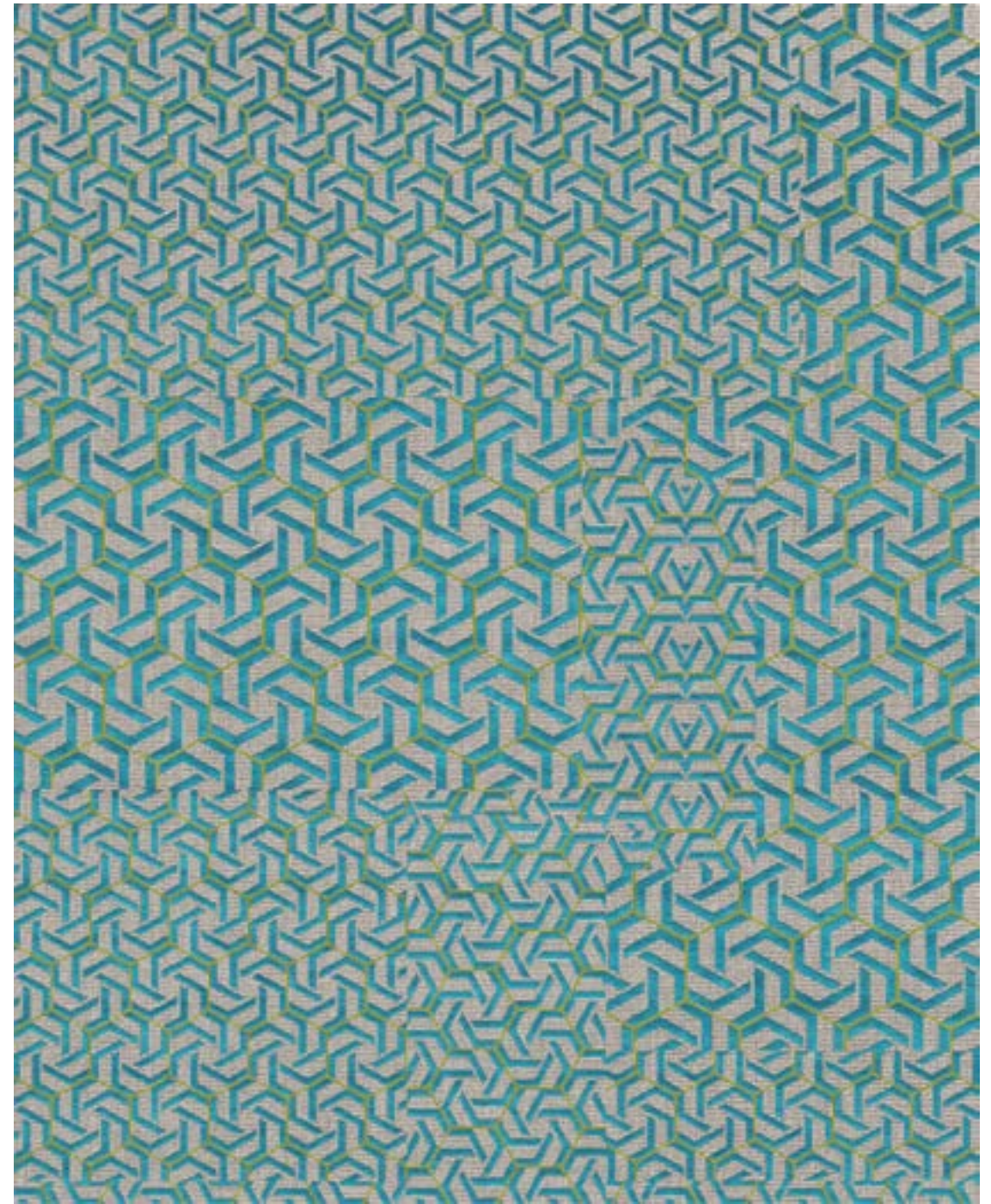
PIANA II-HK, Bark. Jute, Wool, Tencel - jute, laine, Tencel

SYROS I-HK

Colour: Azur

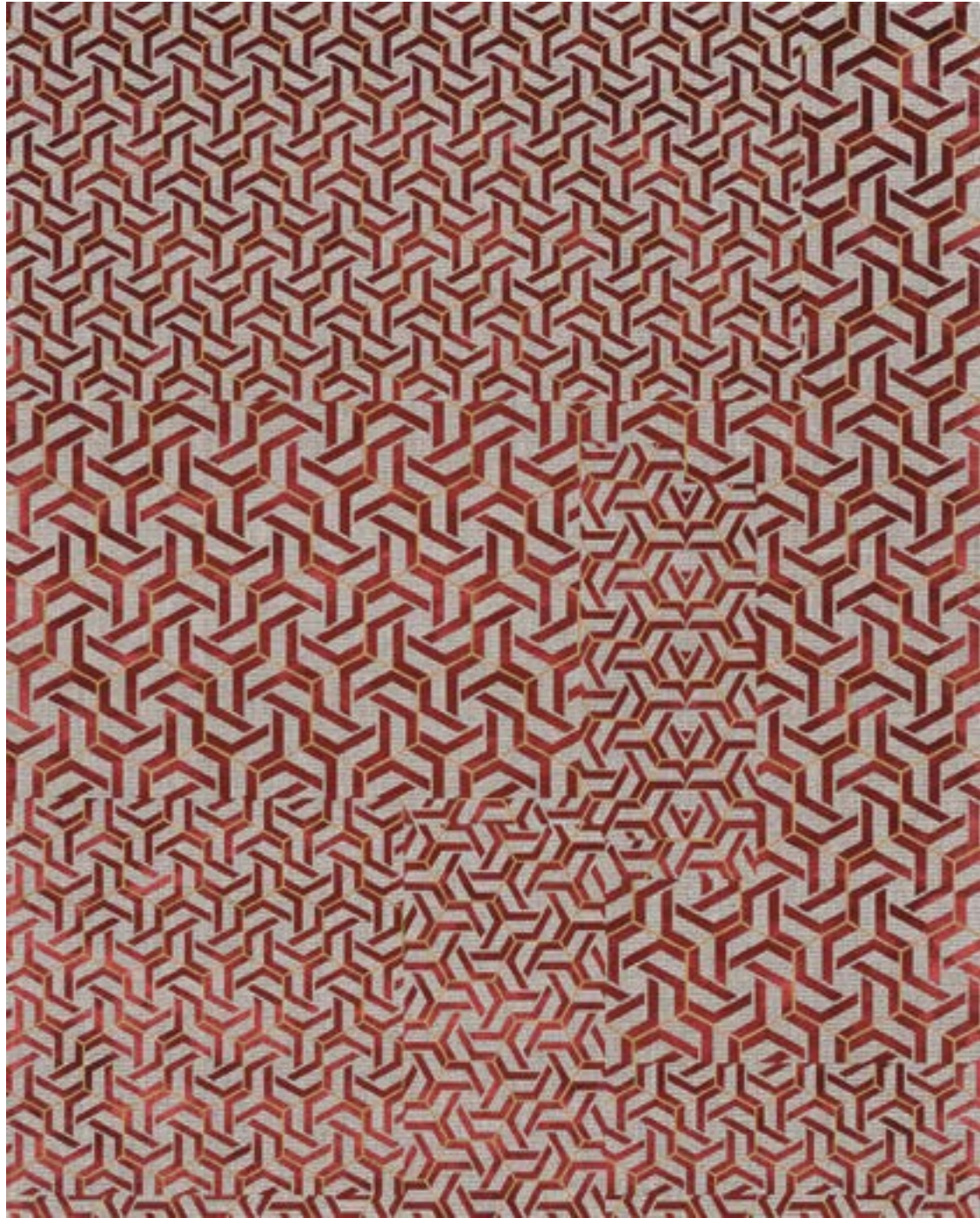
Content: Jute, Cotton,
Wool/Silk/Linen
Matière: jute, coton,
laine/soie/lin

Any size, colour and
material upon request
Dimensions, couleurs et
matières sur demande.





SYROS II-HK, Wheat. Cotton, Wool/Silk/Linen - coton, laine/soie/lin



8' X 10' - 245 X 305 cm

A | T



SYROS I-HK

Colour: Terracotta

Content: Jute, Cotton,
Wool/Silk/Linen
Matière: jute, coton,
laine/soie/lin

Any size, colour and
material upon request
Dimensions, couleurs et
matières sur demande.

A | T

SYROS II-HK

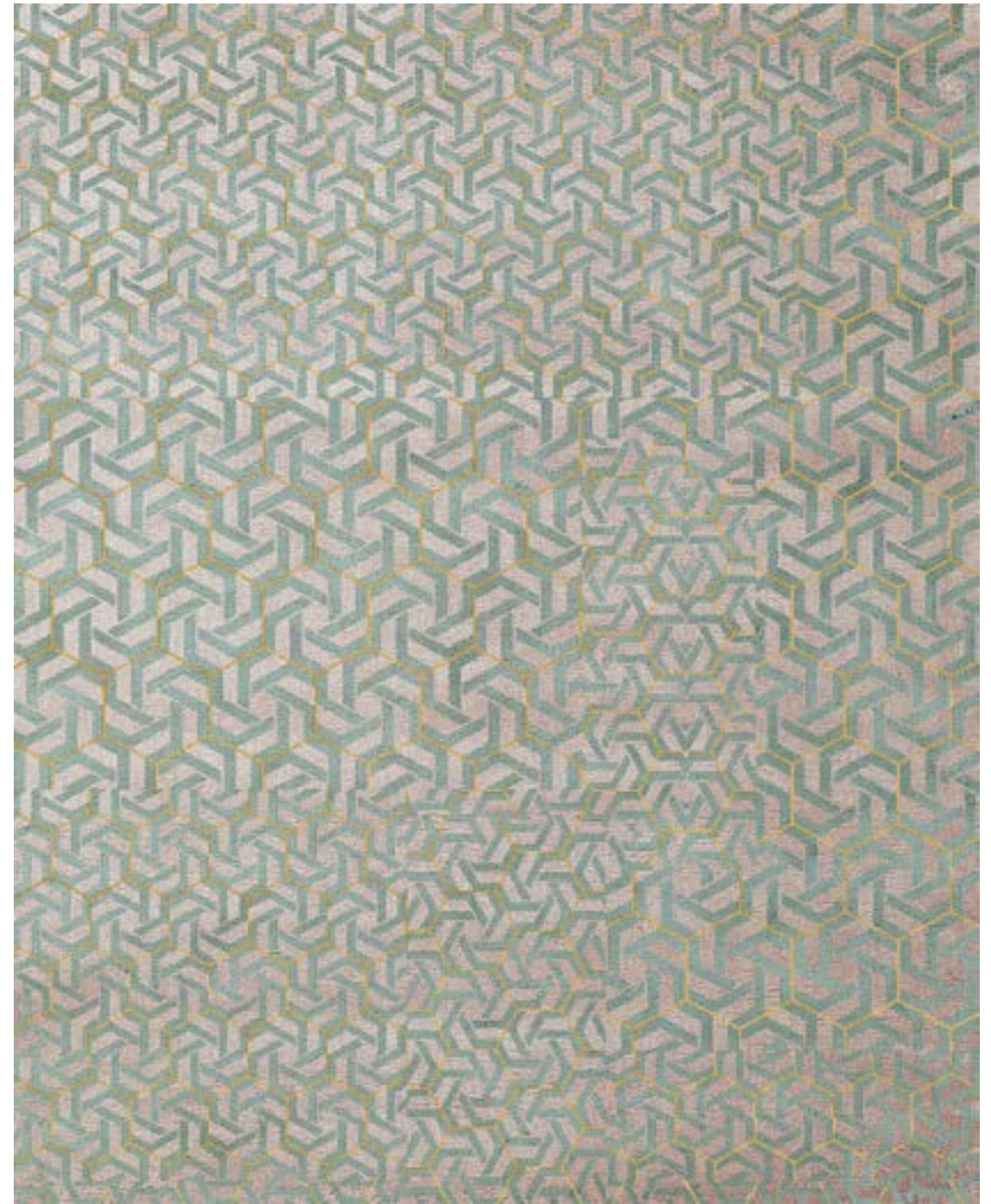
Colour: Magnolia

Content: Cotton, Wool/
Silk/Linen

Matière: coton,
laine/soie/lin

Any size, colour and
material upon request

Dimensions, couleurs et
matières sur demande.





8' X 10' - 245 X 305 cm

A | T



VENCE I-HK

Colour: Cassonade

Content: Wool,
Wool/Silk
Matière: laine,
laine/soie

Any size, colour and
material upon request
Dimensions, couleurs et
matières sur demande.

A | T

VENCE I-HK

Colour: *Acqua*

Content: *Wool,
Wool/Silk*

Matière: *laine,
laine/soie*

**Any size, colour and
material upon request**

*Dimensions, couleurs et
matières sur demande.*



A | T



8' X 10' - 305 X 245 cm

A | T



VENCE I-HK, Magnolia. Wool, Wool/Silk - laine, laine/soie

STANDARD SIZES

Flat-weave



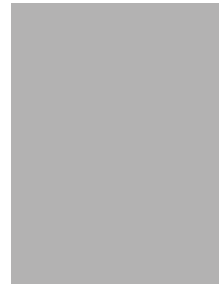
8' X 10'
2,45 X 3,05 m



9' X 12'
2,75 X 3,65 m



10' X 14'
3,05 X 4,25 m



11'48'' X 15'42''
3,50 X 4,70 m

Hand-knotted



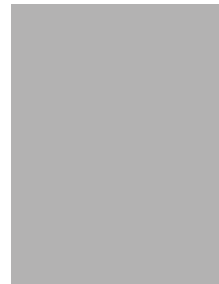
8' X 10'
2,45 X 3,05 m



9' X 12'
2,75 X 3,65 m



10' X 14'
3,05 X 4,25 m



12' X 16'
3,65 X 4,90 m

MADE TO MEASURE

Any size, colour and material available upon request.
Autres dimensions, couleurs et matières sur demande.

CONTACT

Gallery

FRANCE (FLAGSHIP)
14, rue de Lille - 75007 paris
contact@ateliertortil.com
+33 (1) 42 86 89 18
Monday to Friday
10:00AM - 1:00PM
2:30PM - 6:30PM

Press Contact
marketing@ateliertortil.com

Mail contact@ateliertortil.com
Instagram @ateliertortil
Website ateliertortil.com

Partners

UNITED KINGDOM
Invisible Collection London
2-4 Huntsworth Mews
Londres NW16DD
+44 (0)20 3868 9012
Monday - Friday
10AM - 6PM

Nusom Collective
+44 7734 657 118
lucy@nusom.co

SPAIN Barcelona

By appointment only
contact@ateliertortil.com

USA Invisible Collection New York

24 East 64th Street
New York 10065
+1 (646) 759 0619
Monday - Saturday
10AM - 6PM

Invisible Collection Los Angeles

Phillips, 9041 Nemo St
West Hollywood, CA 90069
+1 (646) 759 0619
By appointment only

CANADA

South Hill Home
146 Dupont Street
Toronto Ontario M5R 1V2
416.924.7224
info@southhillhome.com
Monday - Friday
10AM - 6PM

HONG KONG Le cadre Gallery

Ground Floor
53 Sai Street
Sheung Wan
Hong Kong
Monday - Friday
11AM - 6PM
Closed Sat, Sun & Public
holidays
lecadre@netvigator.com
+852 2526 1068

AUSTRALIA Moebel

The Chocolate Factory
Unit 2, 130-144 Cleveland
Street
Chippendale NSW 2008
(enter via 1 Dangar St.)
Sydney
info@moebel.com.au

