

The light of the North

Softness, serenity, calm, silence... Atelier Tortil's new carpet collection invites you on a walk through the Finnish countryside, with its landscapes of rock, moss, granite, flowers and lichen... and its peaceful aquatic expanses.

Hand-knotted with a variety of wools, Finland offers a world of soft optical vibrations, like the horizon where sky and water merge.

The different knotting techniques, the range of yarns and the delicate colours selected have produced these abstract and organic patterns that, with impressionist strokes, evoke the beauties of nature.

The particular charm of the Scandinavian seasons pervades this collection through subtle gradations in apparent monochrome, ideal for expressing all the nuances of light, from diaphanous white to stronger tones, like the northern lights.

"In this collection, I wanted to capture all of the impressions I experienced during my various travels in Finland," explains Jean-Pierre Tortil. "I wanted to convey the magic that results from the alchemy and dialogue between the water, the vegetation, the sky and the earth."

to Anita & Poju

La lumière du nord

Douceur, sérénité, calme, silence... C'est une promenade à travers la nature finlandaise, ses paysages de roche, de mousse, de granit, de fleurs et de lichen... et ses paisibles étendues aquatiques que la nouvelle collection de tapis d'Atelier Tortil propose.

Noué à la main avec plusieurs types de laine, Finland offre un monde de douces vibrations optiques, telle une ligne d'horizon où ciel et eau se confondent.

Les différentes techniques de nouage, la variété des fils et la délicatesse des couleurs sélectionnées ont donné naissance à ces motifs abstraits et organiques suggérant par touches impressionnistes les beautés de la nature.

Le charme particulier des saisons scandinaves plane sur cette collection grâce aux dégradés subtils déclinés dans une apparente monochromie, idéale pour exprimer toutes les nuances de la lumière, du blanc diaphane aux tonalités plus affirmées, telles des aurores boréales.

« Je souhaitais traduire dans cette collection toutes les impressions vécues lors de mes différents séjours en Finlande, explique Jean-Pierre Tortil, retranscrire cette magie qui naît de l'alchimie et du dialogue entre l'eau, la végétation, le ciel et la terre. »

FINLAND











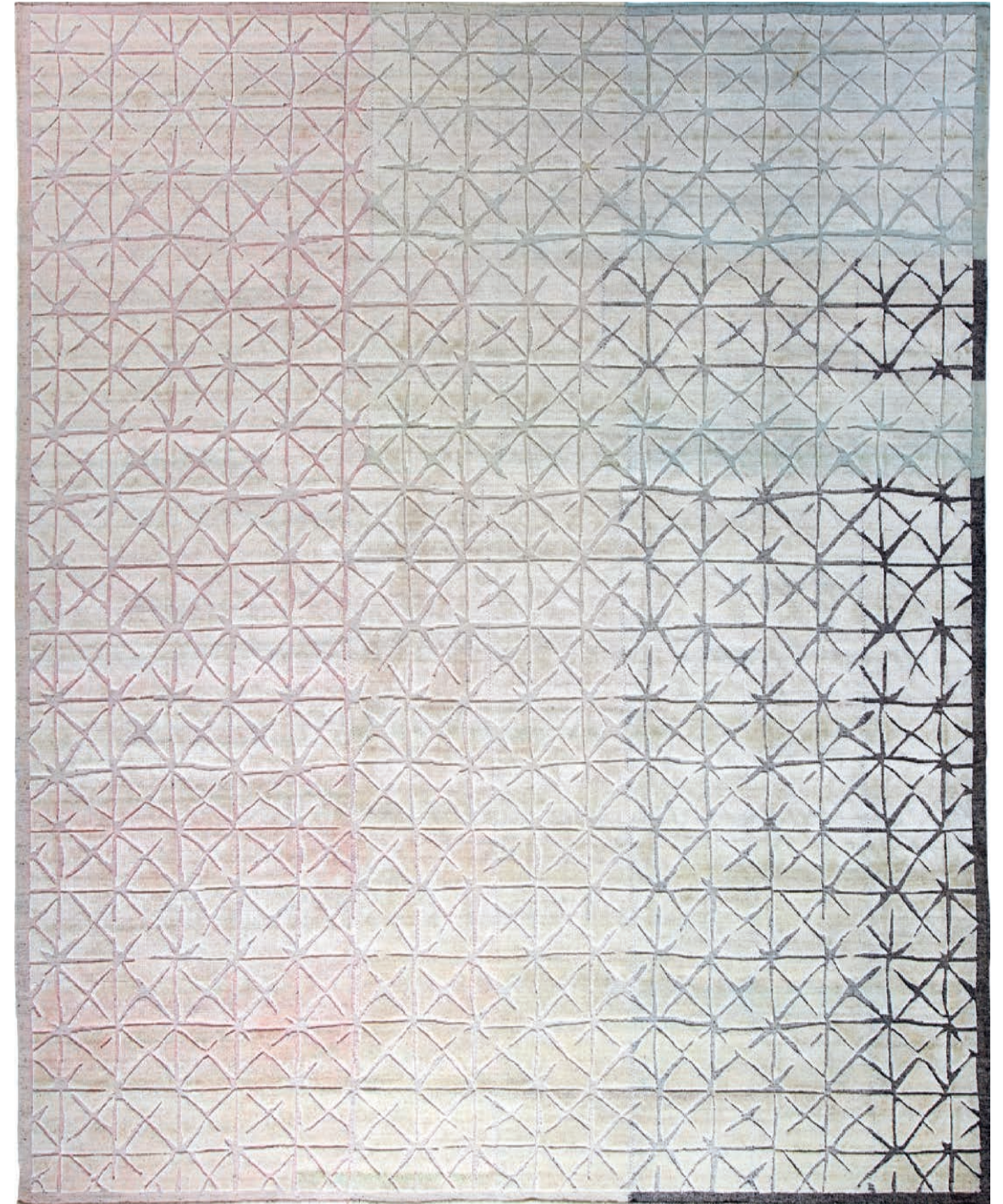
LINNA I-HK

MOSS
Wool / Viscose - 2,45x3,05m (8'x10')



LINNA I-HK - MOSS
Wool / Viscose





TWILIGHT
Wool / Viscose - 2,45x3,05m (8'x10')

SKALDO II-HK



SKALDO II-HK - TWILIGHT
Wool / Viscose



SKALDO I-HK - GRANITE
Wool / Viscose



VANO II-HK

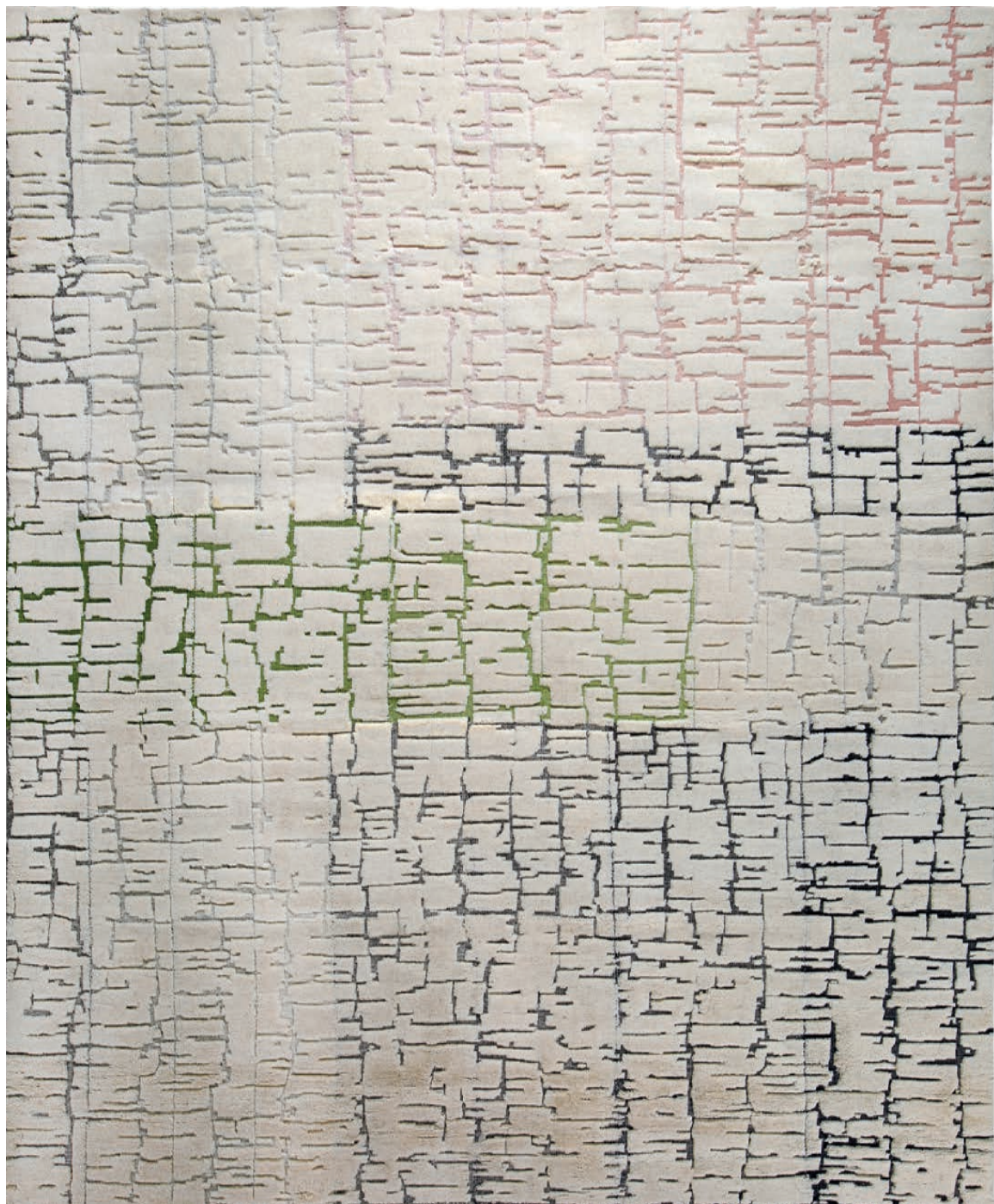
BOREAL
Wool - 2,45x3,05m (8'x10')



VANO II-HK - BOREAL
Wool



VANO II-HK - BOREAL
Wool



HANKO II-HK

SUNRISE
Wool / Viscose, Wool - 2,45x3,05m (8'x10')



HANKO II-HK - SUNRISE
Wool / Viscose, Wool



HANKO I-HK - GRANITE

Wool / Viscose



PADVA I-HK

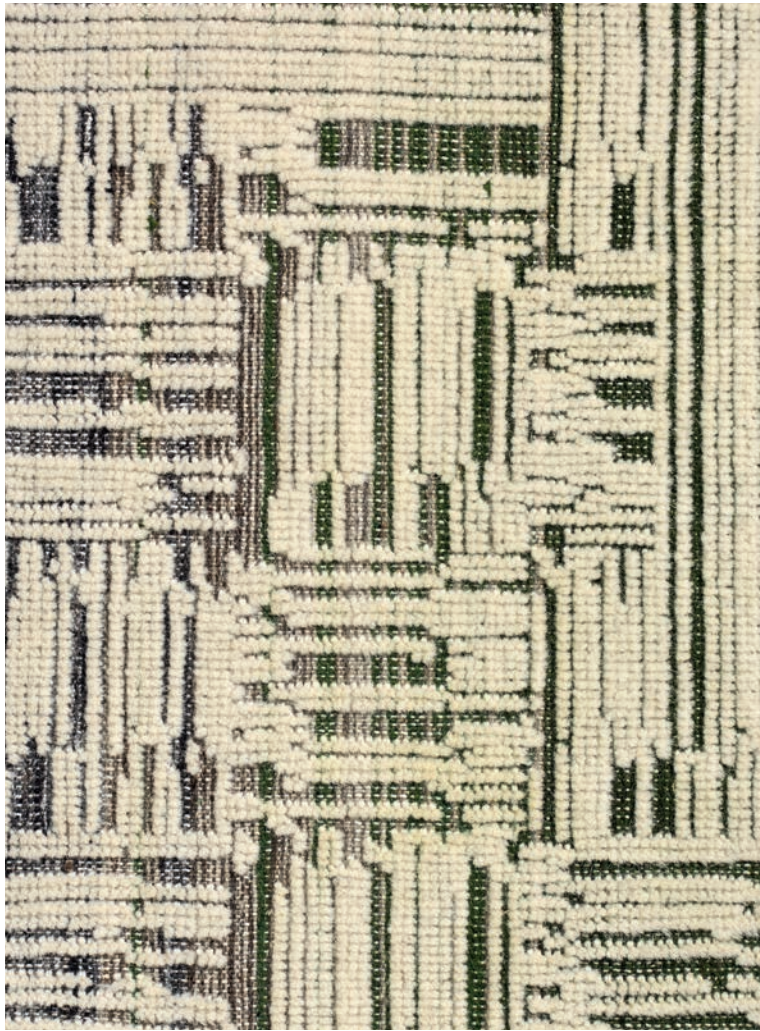
BIRCH
Wool - 2,45x3,05m (8'x10')



PADVA I-HK - BIRCH
Wool



PADVA I-HK - BARK
Wool



TAIGA
Wool / Viscose, Wool - 2,45x3,05m (8'x10')

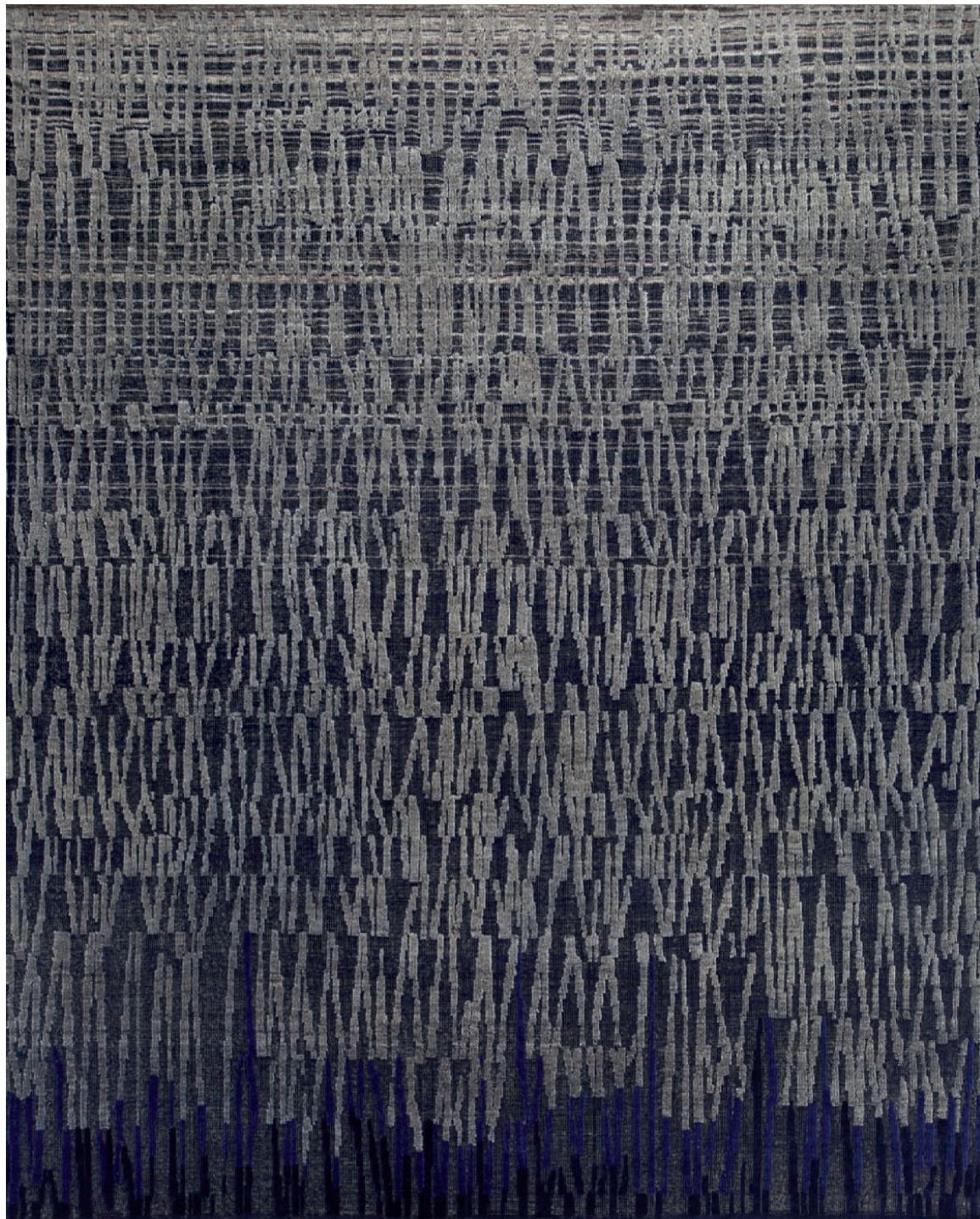
PADVA II-HK



PADVA II-HK - TAĪGA
Wool / Viscose, Wool



PADVA II-HK - TAIGA
Wool / Viscose, Wool



ENO II-HK

MIDNIGHT
Wool / Wool, Viscose - 2,45x3,05m (8'x10')



ENO II-HK - MIDNIGHT
Wool



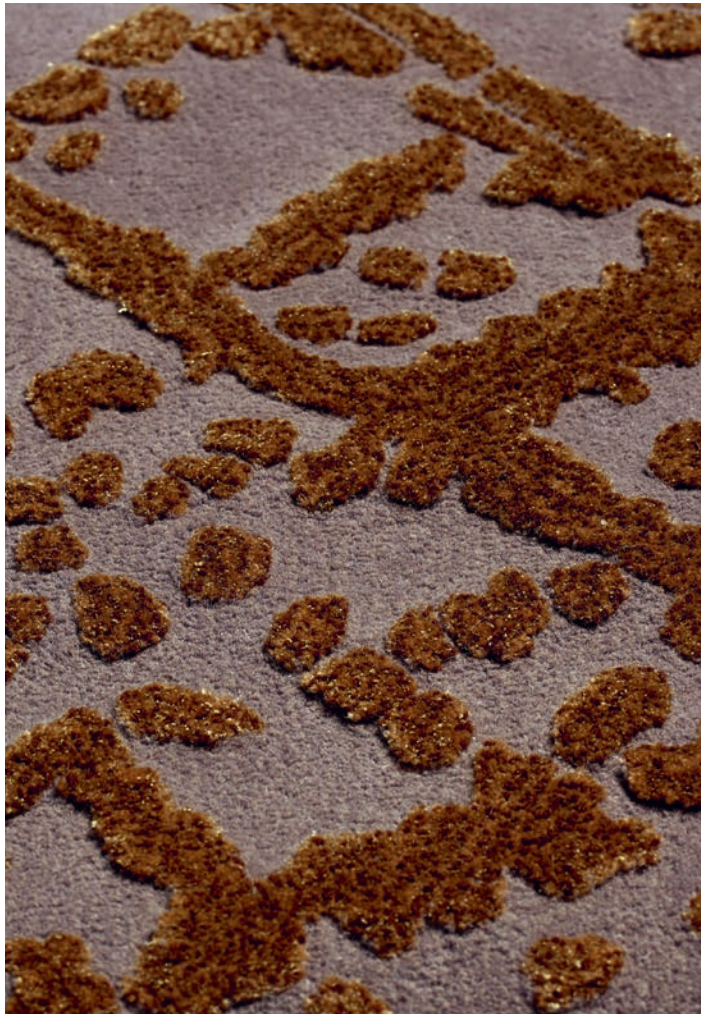
ENO I-HK - STONE

Wool



HIRSI II-HT

SHALE
Silk, Wool / Lucent (Nylon) / Lurex - 2,45x3,05m (8'x10')



HIRSI III-HT

FALL
Wool, Wool / Gleam (Nylon) - 2,45x3,05m (8'x10')



KOIVU I-HT

SNOWFALL
Wool / Wool, Lurex, Lucent (Nylon) - 2,45x3,05m (8'x10')



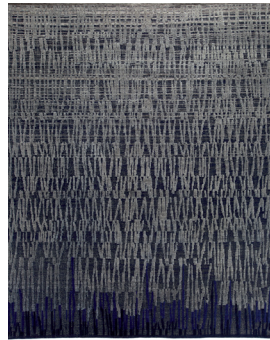
SNOWFALL
Tencel, Wool / Lucent (Nylon) / Lurex - 2,45x3,05m (8'x10')

TUOHI I-HK



CATALOG

Index



Eno II-HK
Midnight



Hanko II-HK
Sunrise



Hirsi II-HT
Shale



Hirsi III-HT
Fall



Koivu III-HT
Snowfall



Linna I-HK
Moss



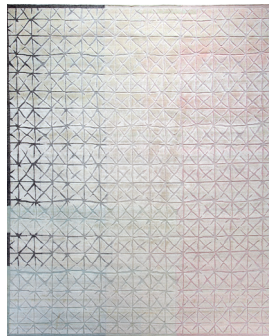
Linna I-HK
Lapland



Padva I-HK
Birch



Padva II-HK
Taiga



Skaldo II-HK
Twilight



Tuohi I-HK
Snowfall

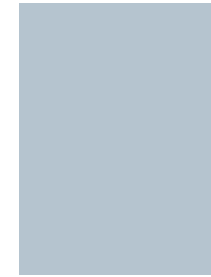


Vano II-HK
Boreal

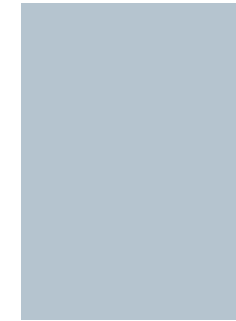
Standard sizes



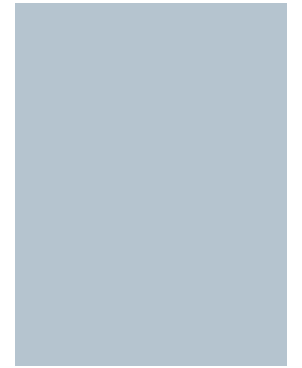
8' X 10'
2,45 X 3,05 m



9' X 12'
2,75 X 3,65 m



10' X 14'
3,05 X 4,25 m



12' X 16'
3,65 X 4,90 m

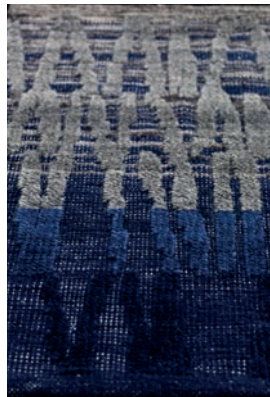
Made to measure

Any size, colour and material available upon request.
Autres dimensions, couleurs et matières sur demande.

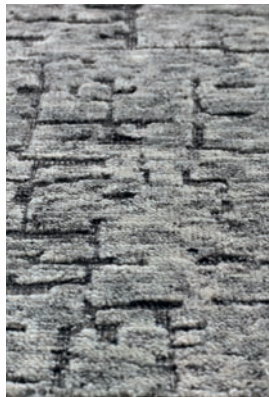
Samples



Eno I-HK
Stone



Eno II-HK
Midnight



Hanko I-HK
Granite



Hanko II-HK
Sunrise



Padva II-HK
Taiga



Skaldo I-HK
Granite



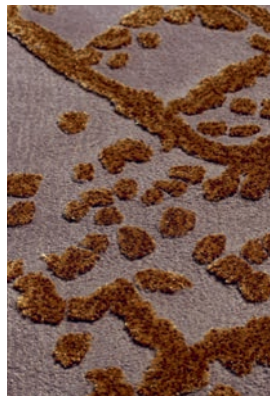
Skaldo II-HK
Twilight



Tuohi I-HK
Snowfall



Hirsi II-HT
Shale



Hirsi III-HT
Fall



Koivu I-HT
Snowfall



Linna I-HK
Lapland



Vano I-HK
Stone



Vano II-HK
Boreal



Linna I-HK
Peeble



Linna I-HK
Moss



Padva I-HK
Birch



Padva I-HK
Bark

Galerie: 14, rue de Lille - 75007 Paris
+33 (1) 42 86 89 18

Mail: contact@ateliertortil.com

Instagram: @ateliertotil

Website: ateliertortil.com

Graphic design: Alain Bourdon

CONTACT